



yaşamınıza renk yaşantınıza ahenk
colour in your days, harmony in your life



Kontrat Halı Desen Katalođu **Renk ahenk**

Contract Carpet Design Catalogue **Harmony of colours**

Türkiye'de **CE Sertifikası**'na sahip ilk tufting halı üreticisidir.
*The first tufting carpet manufacturer in Turkey having the **CE Certificate**.*



yaşamınıza renk yaşantınıza ahenk
colour in your days, harmony in your life



Renkahenk
Harmony of colours

 **dinarsu®**

yaşamınıza renk yaşantınıza ahenk
colour in your days, harmony in your life



Her adımda başka bir rüya...

A different dream with each step...

Yaşam mekânları beğenilerinizi, tarzınızı, sizi yansıtır. Zaman içinde farklı amaçlarla kullandığınız bu mekânları yenileme ihtiyacı hissedersiniz. Bazen küçük dokunuşlar, bazen köklü değişim...

Dinarsu Renk Ahenk desen kataloğu bu değişim sürecinde size rehberlik etmek, fikir vermek amacıyla hazırlandı. Keyifle hazırlayıp, mutlulukla yaşayacağınız mekanlar için...

Living spaces reflect your style. In time, you feel the need to renew these spaces that you used for different purposes. Sometimes, small touches, sometimes a changeover...

Dinarsu Colour harmony pattern catalogue is prepared in order to guide you and given an idea during this change. For the indoors that you will decorate joyfully and live happily.



High Definition Özelliği...

High Definition Speciality...

Gerçekleştirebilecekleriniz adeta sınırsız. Bu teknoloji sayesinde halı üzerinde ahşabı taşa, kağıdı metale, plastiği altın görünümüne çevirebilirsiniz. Aklınıza gelen her şeyi halı deseniniz üzerinde kullanmakta özgürsünüz...

Doğa koşullarından ya da kullanılmaktan yıpranmış yüzeyler yaratmak istiyorsanız, yıllar geçmesini beklemenize gerek yok. Mekanlarınıza yaşanmışlık hissini verecek yöntemimiz ile sınırsız bir atmosfer yaratabilirsiniz...

What you can achieve is virtually unlimited. With this technology, you may turn wood appearance to stone, paper to metal, plastic to gold on the carpet. You are free to use anything in your mind on the carpet pattern...

If you want to create surfaces which are worn-out due to natural conditions or long-years of use, you don't have to wait for years anymore. You can create a very cozy ambient with our methods which will give a vintage feeling to your indoors.





Renk ahenk

Harmony of colours

Renkler insan doğasının merkezinde bulunurlar. Bu yüzden yaşam alanlarımızı düzenlerken renklere ayrı bir önem vermemiz gerekiyor. Özellikle iç mekanlarımızda. Eğer ışık tarafından oluşturulan renkler olmasaydı çevremizi grinin tonlarıyla bile göremezdik. Ne renk olurdu ne de nüans, hiçbir şeyi ayırt edemezdik.

Colour occupies a central place in the human nature: Therefore, we should place a special importance on colour while decorating our living spaces. Particularly in our indoors. If there was no colours created by the light, we couldn't see even with shades of grey. Neither colour would exist, nor nuance, we couldn't distinguish anything.



Halı döşerken renk seçimi; *Color selection for carpeting;*

Açık renkler küçük odalara geniş bir görünüm, koyu renkler ise büyük odalara daha sıcak ve daha rahat bir izlenim kazandırır. Halinin rengi mekândaki ışığa göre değişecektir. Örneğin gün ışığı altındaki halinin rengiyle, halıya direkt yansıyan bir lambanın ya da yerden aydınlatmanın, halinin rengi üzerindeki etkileri farklıdır.

Renkleri doğru yerlerde kullanmayı bildiğiniz zaman, mobilyanızın bile yerini değiştirmenize gerek kalmadan mekânlarınız dönüşüm geçirir. Renkler ile optik illüzyonlar yaratabilir ve hacmin görsel algısını değiştirebilirsiniz.

Lighter colours give a wider outlook to the smaller rooms, darker colours give cozier and more comfortable impression to the larger rooms. The colour of the carpet will vary with the light in the space. For example, the effects are different between the colours of carpet which is lightened by floorlight or a lamb reflected to the carpet and under the daylight.

If you know how to use colours at right places, your indoors transform without necessarily changing places of your furniture. You may create colourful optical illusions and change the visual perception of the volume.





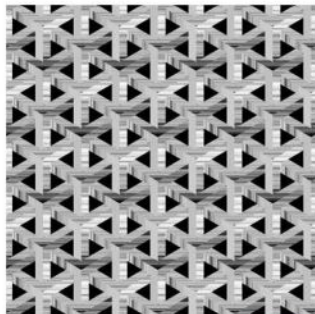


Kontrat Hali | Renk ahenk
Contract Carpet | Harmony of colours

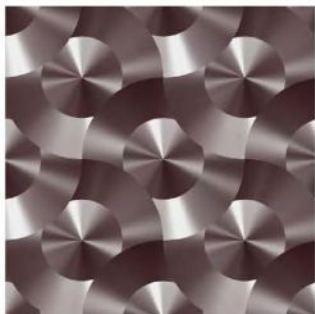




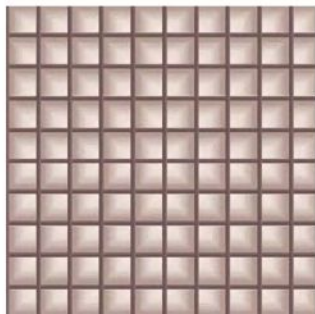
1209601017



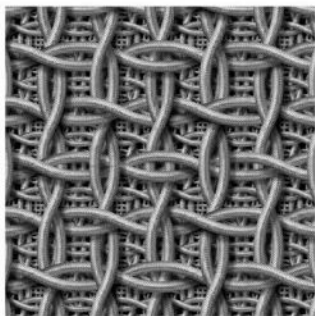
1209600047



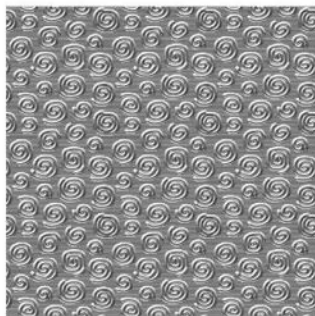
1209501127



1209548077



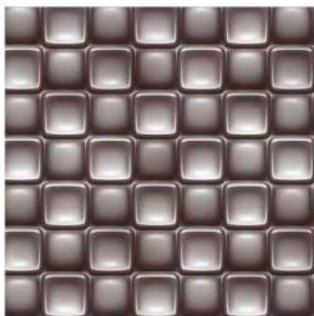
1112584017



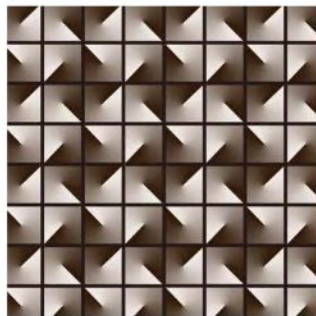
1209502027



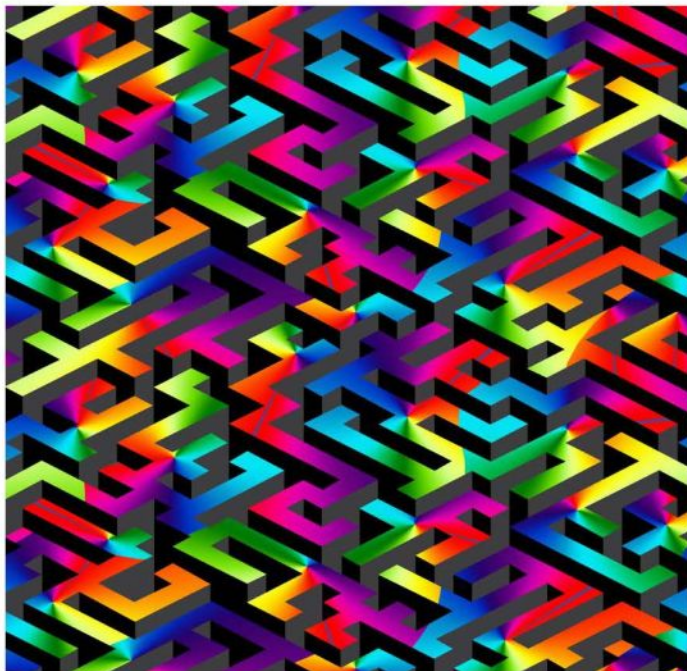
1209595017



1209596067



1112139027



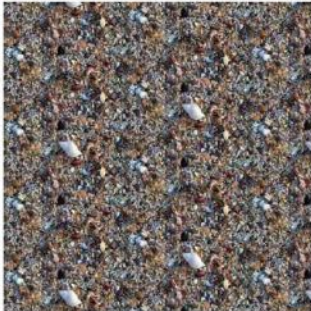
1112146037



1112569017



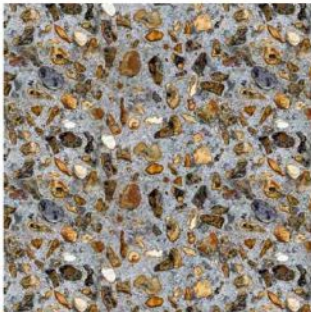
1112558017



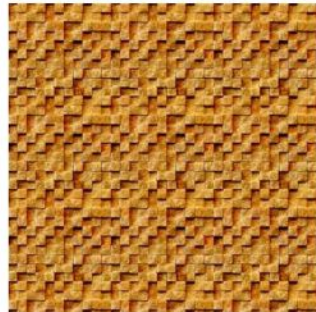
1112555017



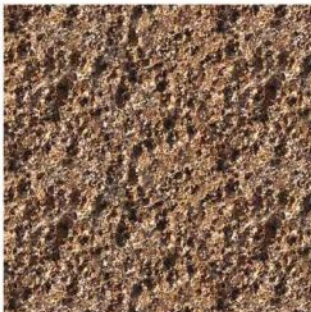
1112557017



1112559017



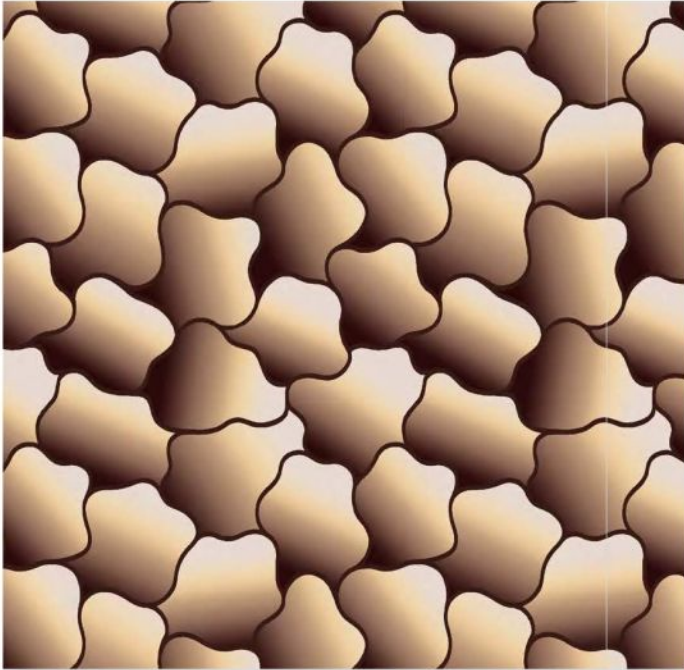
1112560047



1112561037



101227001



1211217017



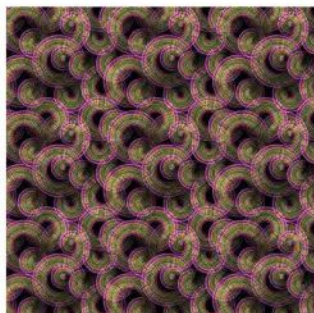
1211724087



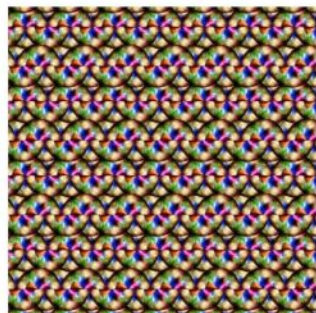
1211716037



101104802



101112201



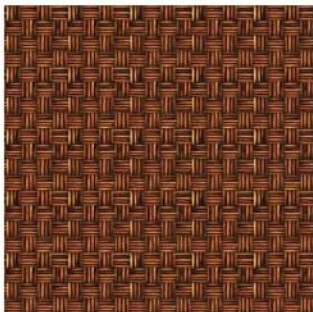
1112589017



101014101



101103804



101105802



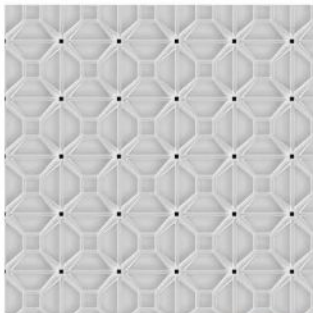
101113801



1212900017



101011001



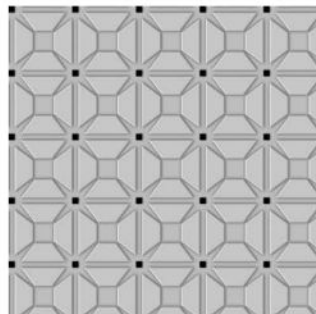
1203238047



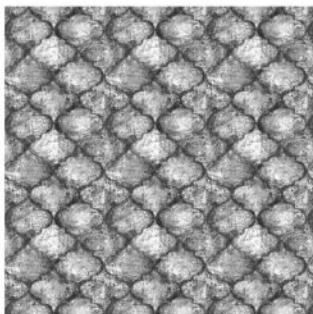
1211733017



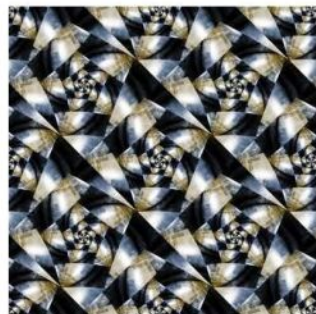
1209550107



1203238037



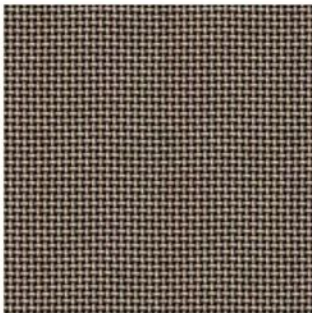
1211762027



1112573017



1209013017



1112554017



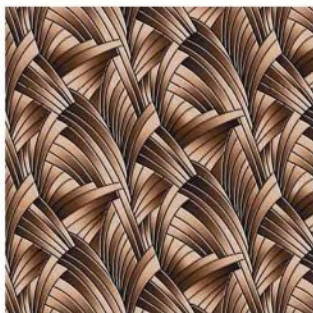
1211773027



1209045017



1209045027



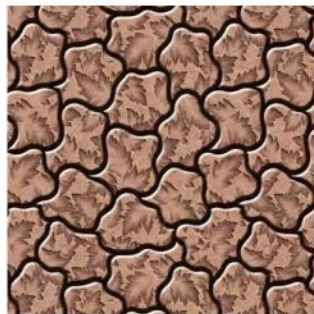
1209077017



1209080017



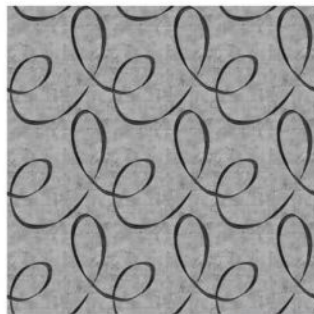
1209010047



1209011017



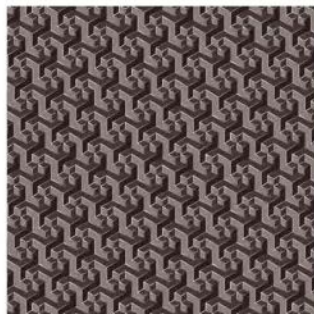
1211936017



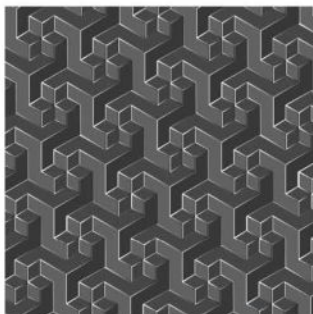
1211936047



1112613017



1209602027



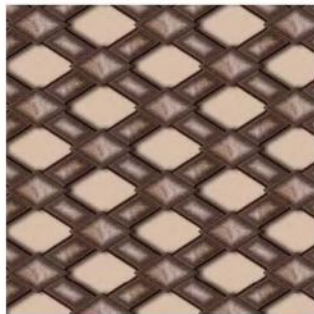
1209602017



1209601097



1210501017



1210523087



1210530027



1209049027



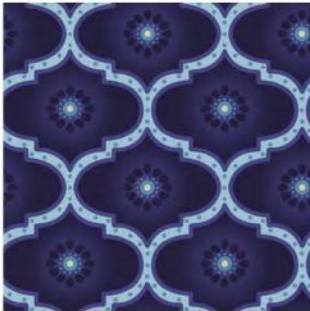
1209075017



1209086017



101107801



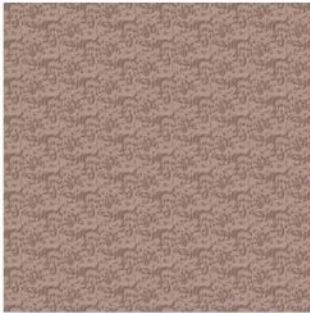
1208003047



1208003027



101106101



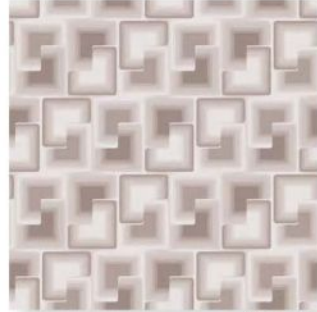
1112142027



1211771027



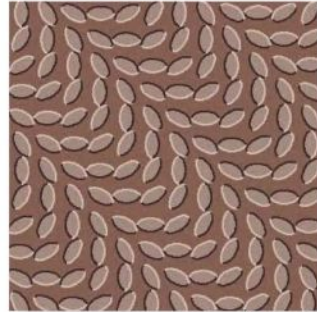
1112566017



1209597097



1106172027



1209552227



101106304



101005001



Kontrat Halı
Contract Carpet

Renk ahenk
Harmony of colours





1211732027



1210003017



1209050017



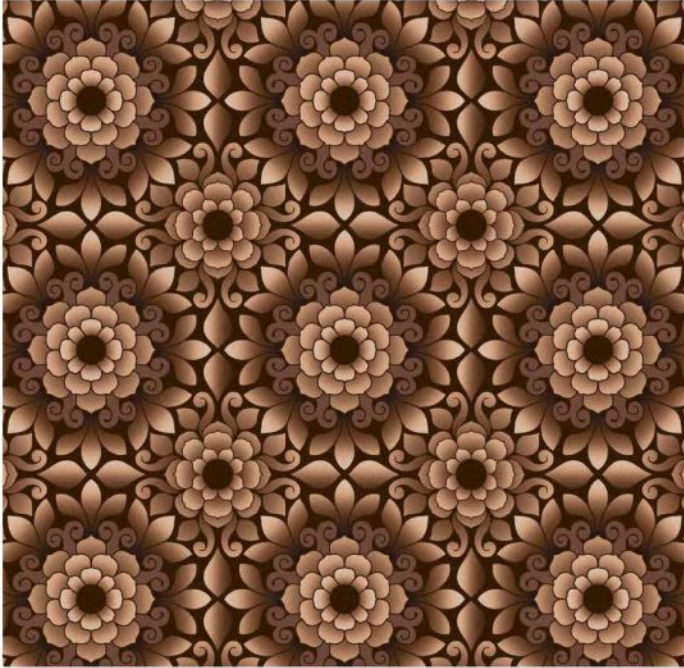
1112564057



101001701



1209071017



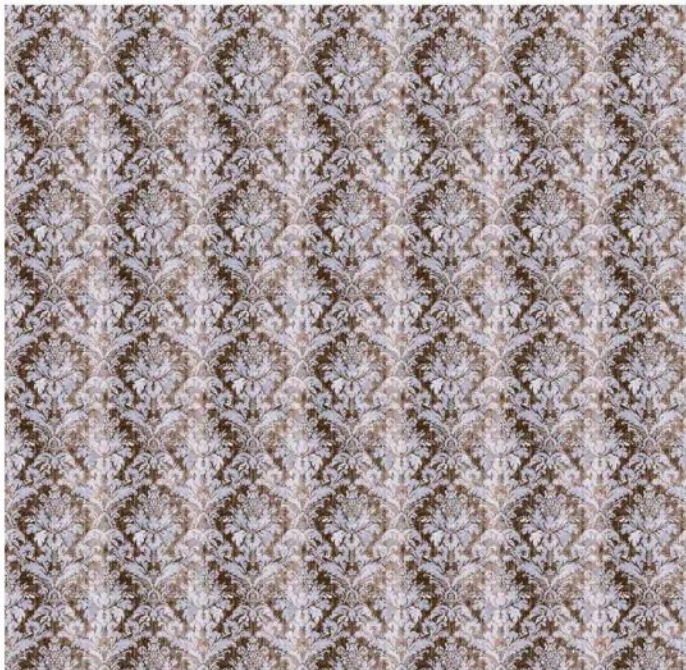
1209014017



1209049037



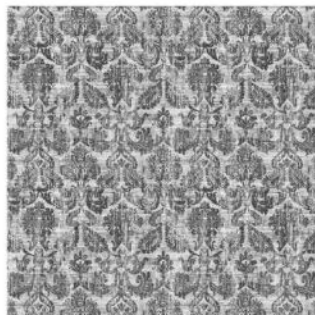
1209072017



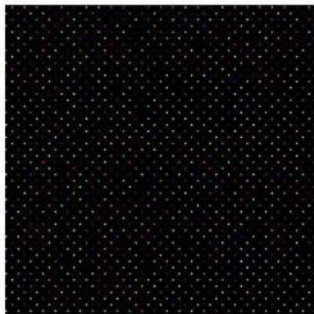
1202514027



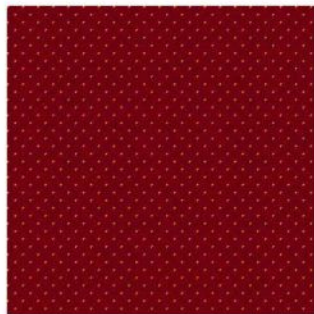
101200902



1211755067



1110581037



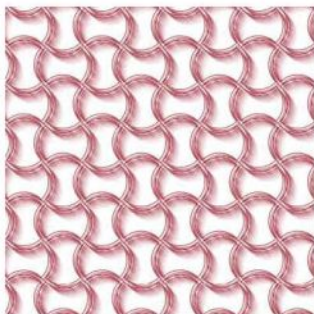
101100905



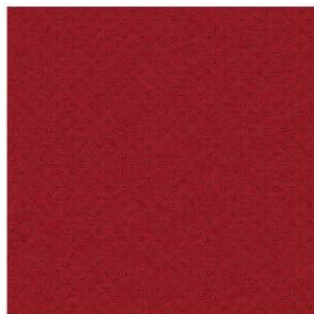
1202514037



1112147017



1209599017



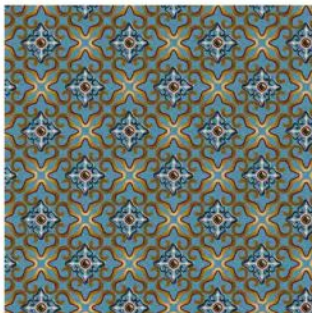
101201606



1104028017



1207074017



1208002027



1208002037



1207068027



1208003037



1208001037



1208001027



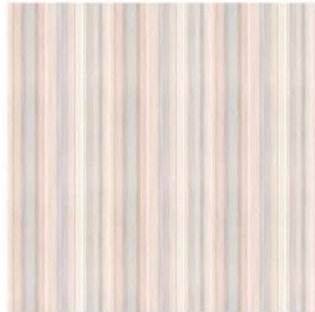
1208001047



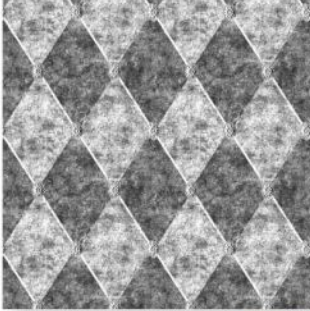
1211714027



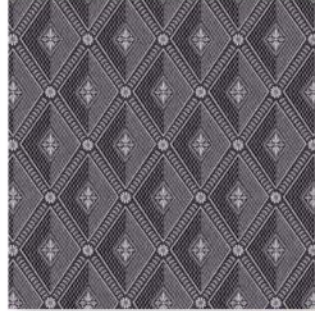
1211759047



1211817087



1211787057



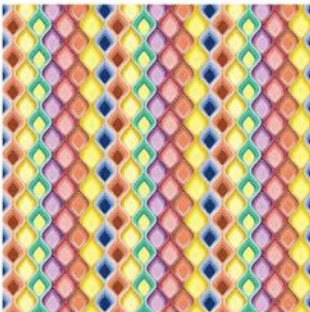
1209506327



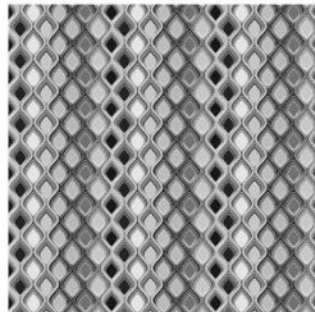
1211713047



1211749037



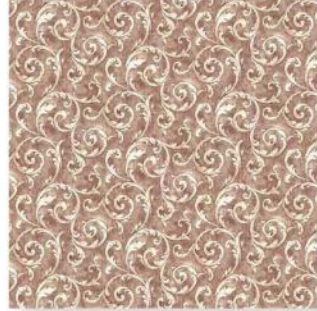
1211946157



1211946167



1211726037



1211780077



1211781067



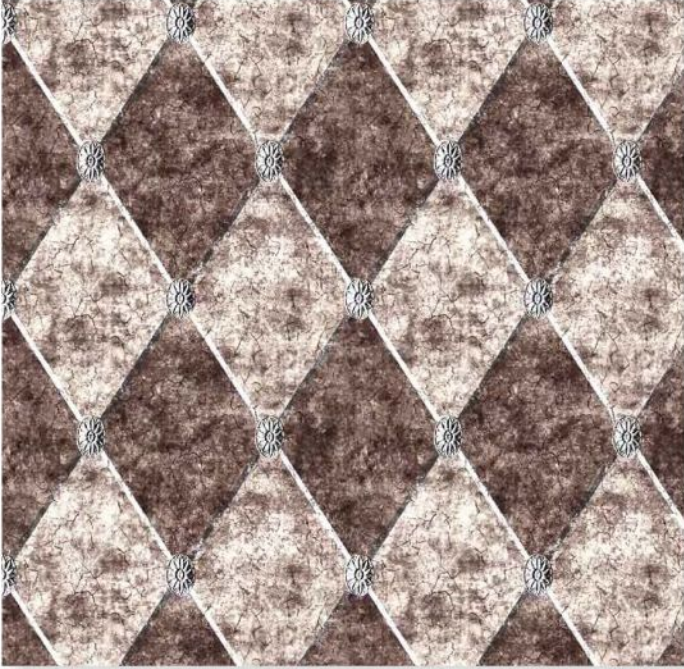
1211785027



1211813087



1211784047



1211787037



1211811077



1211742037



1112150017



101112779



1011054067



101226501



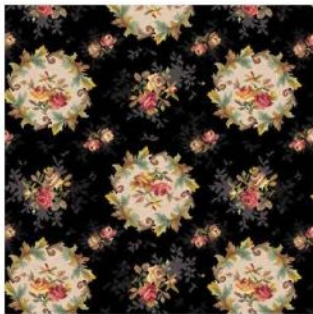
101217202



101226301



1110016037



110108415



110103388



110113971



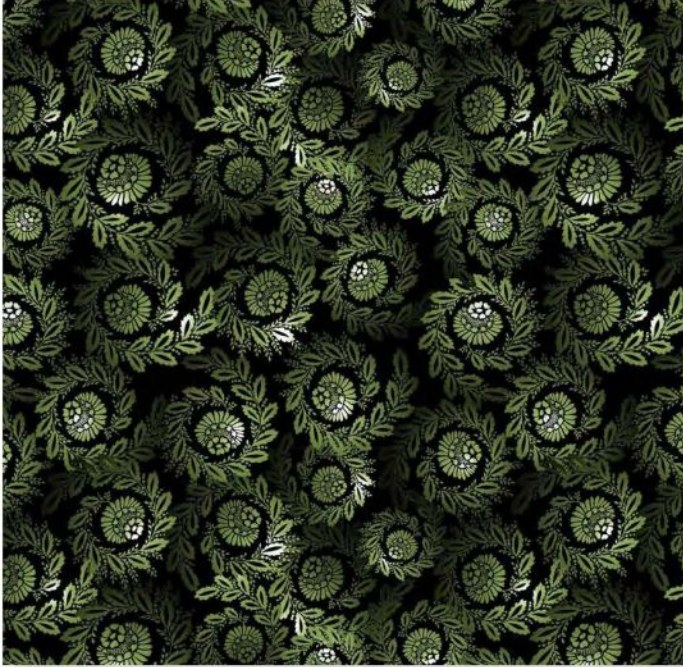
110115171



1109607087



110353172



101203102



101213003



101213101



101112005



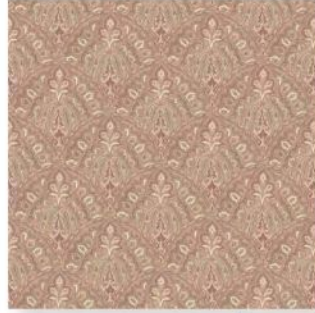
1211745077



1211743037



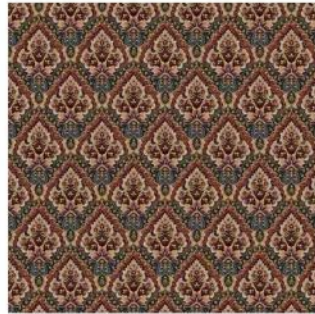
101105402



121177027



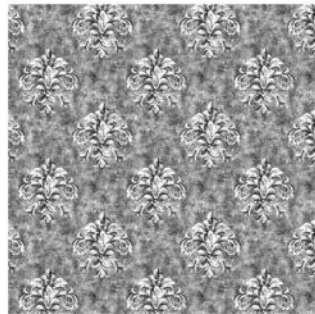
101004403



101001601



1211751037



1211785057



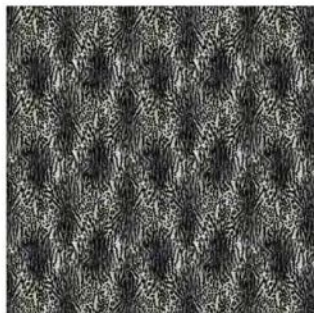
1211935017



101219101



1211978017



110353471



110367171



1211612057



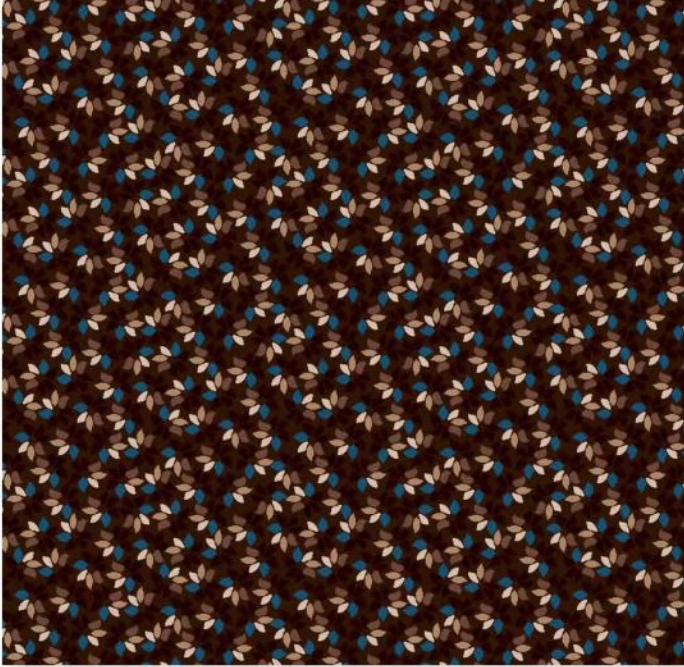
101220601



101220604



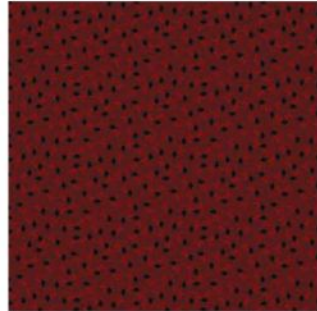
101220608



[1107083027]



[1107083057]



[1107083097]



1107121087



1110033207



1110033367



1107121147



1110033217

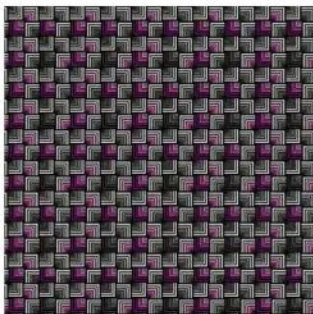


1107121237

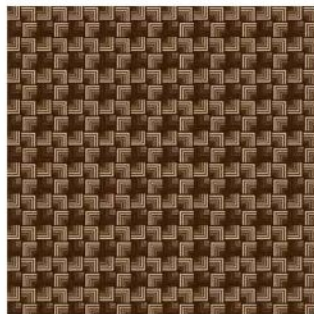


Kontrat Hali | Renk ahenk
Contract Carpet | Harmony of colours

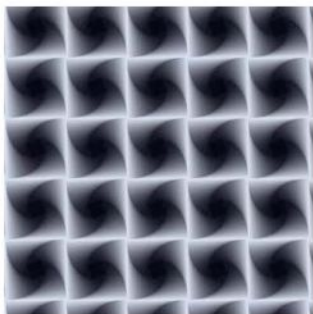




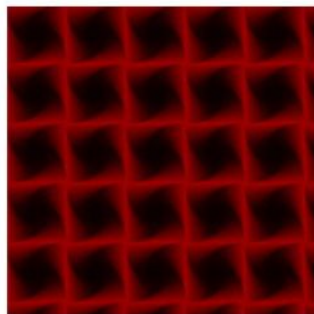
1107117047



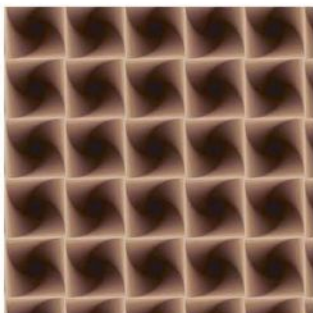
1107117087



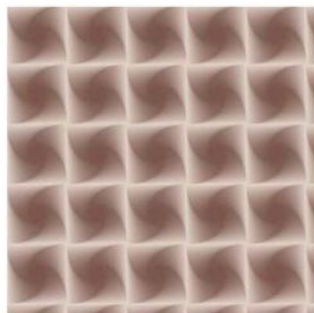
1110104017



1110104047



1110104277



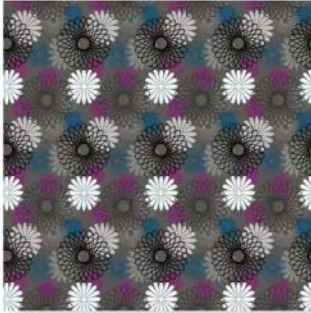
1110104437



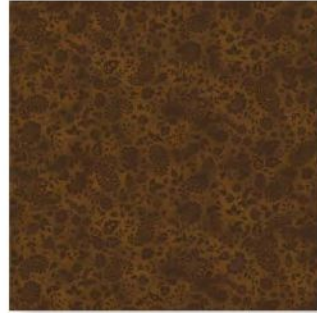
1211816027



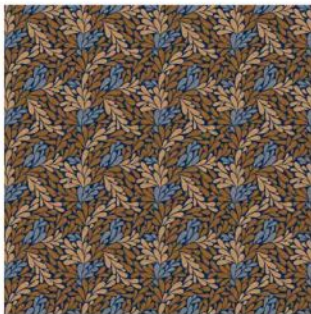
1210741057



1107109057



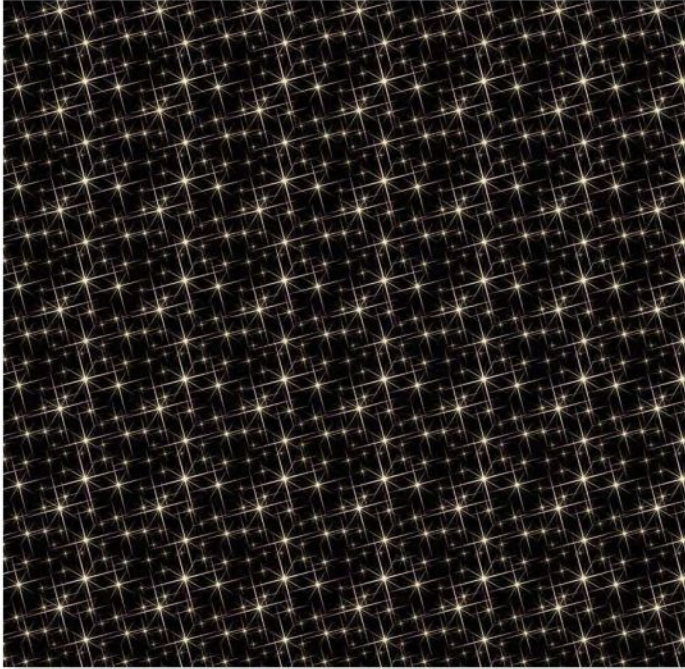
101217805



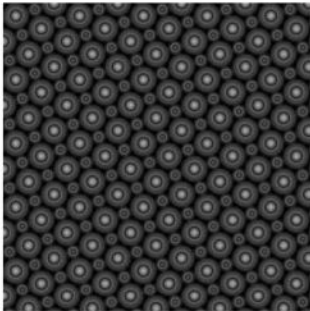
1211129097



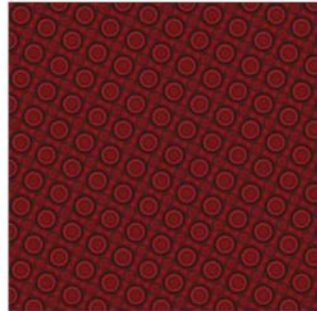
1211152027



1101121127



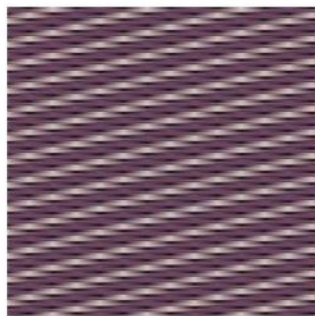
1111009037



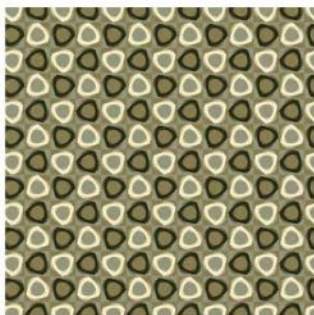
1111009047



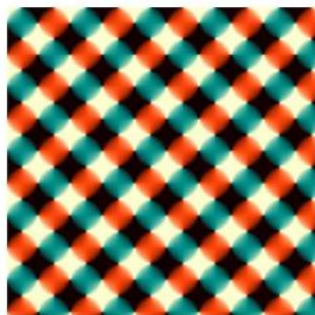
1110096017



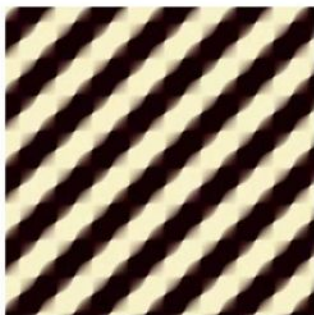
1110096027



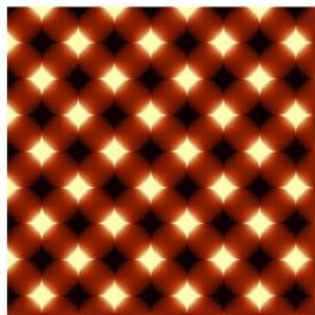
1110100017



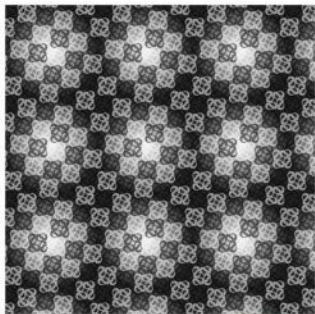
1110101017



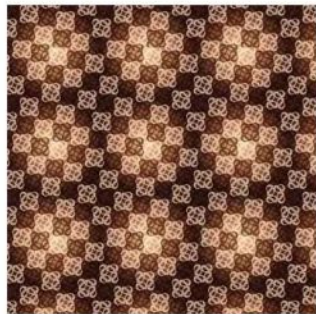
1110102017



1110105027



11110098037



11110098047



1111076037



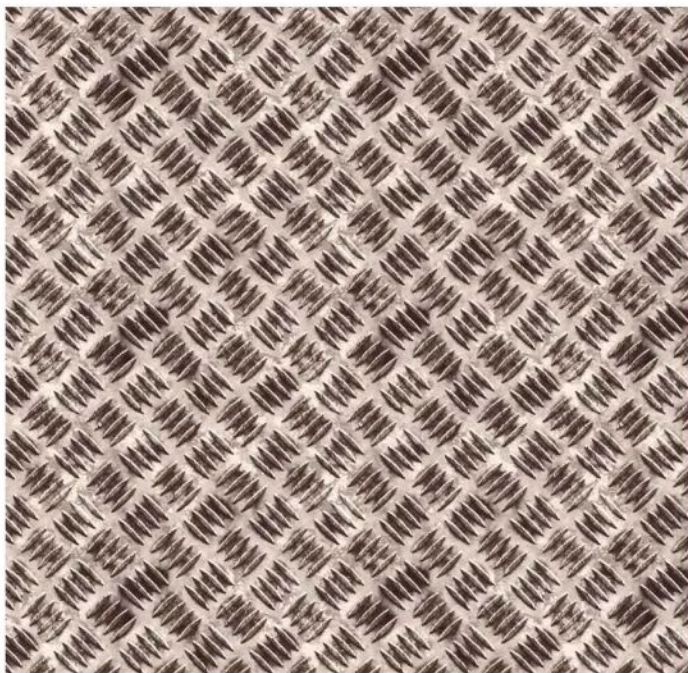
1111076107



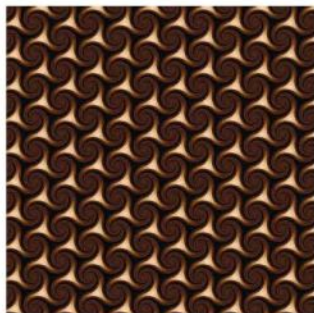
1111076117



1111076127



1211739037



1111010047



1111029077



1111029157



1111029117



1111029177



1107106057



1107106167



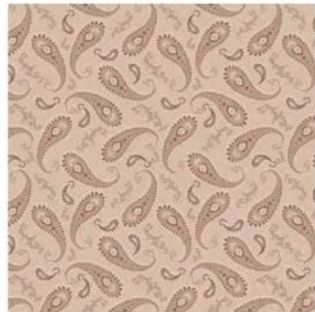
1107110017



1111040077



1111040097



1111040107



1107108027



1107108067



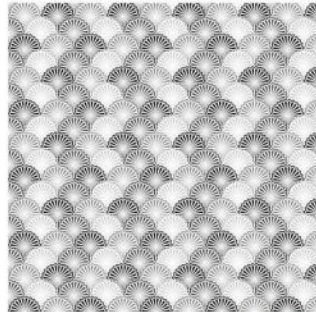
1110020017



1110020027



1111008037



1111008047



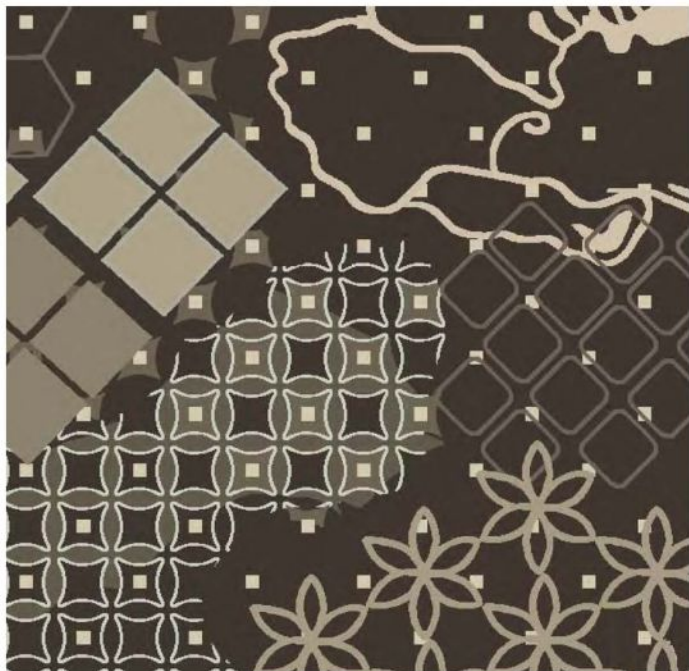
1101042027



1205505027



1205506027



1205507027



1205508027



1208513017



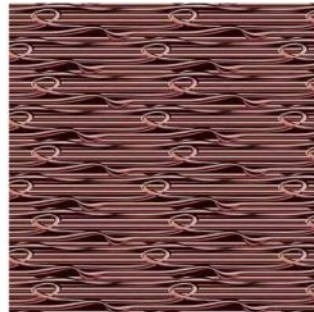
1211753067



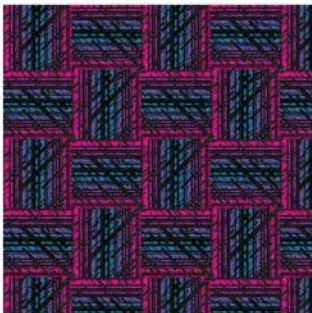
1104001057



1104002057



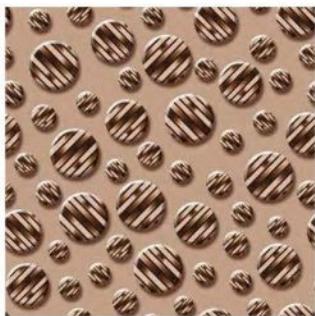
1110099027



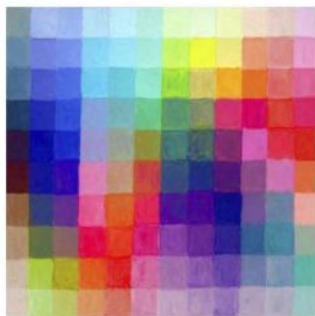
1111011017



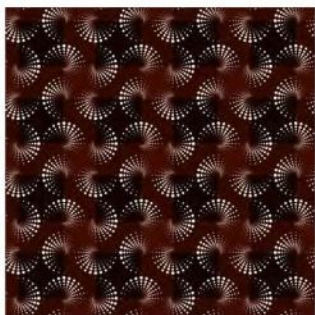
1111011037



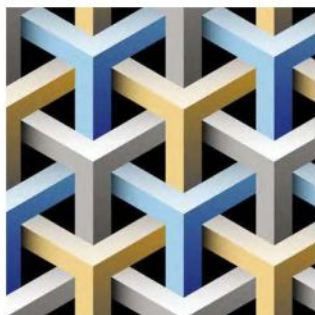
1209083027



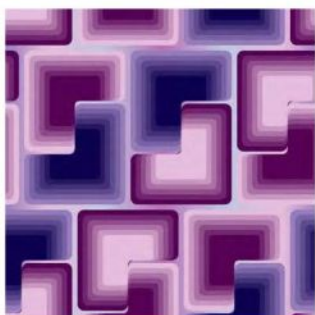
1107003017



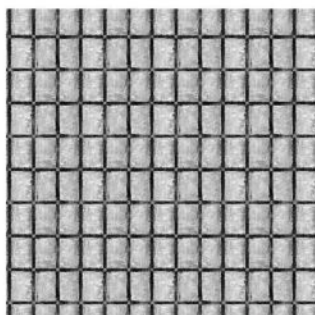
1110103017



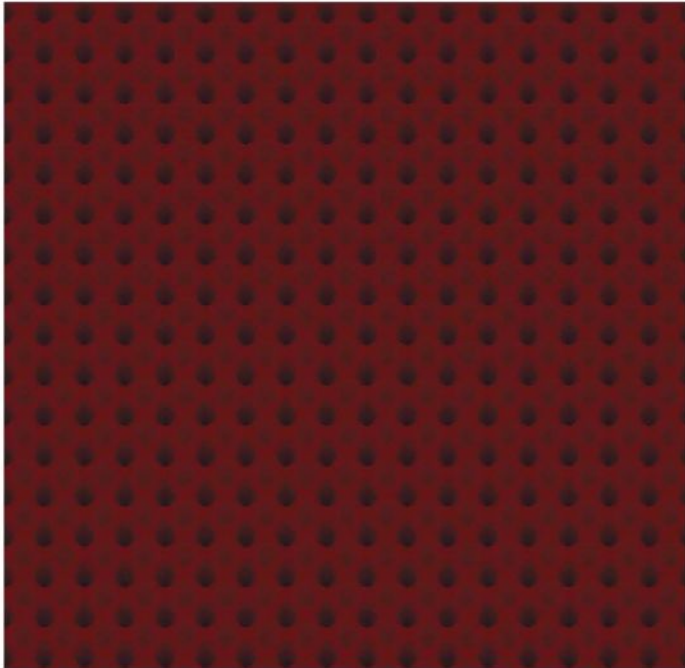
1209600017



1209597017



1211922067



1111012017



1111013017



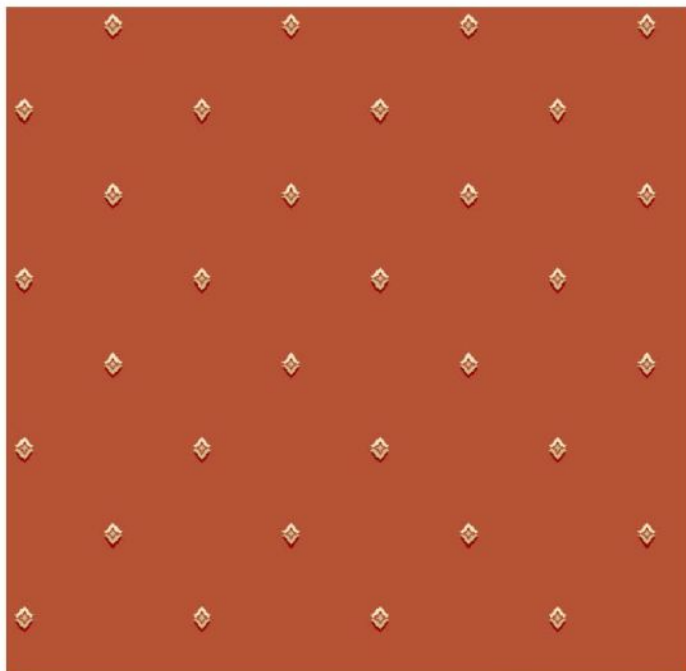
1111015017



Kontrat Hali
Contract Carpet

Renk ahenk
Harmony of colours





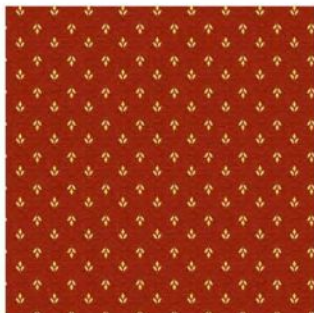
RENKLER  070401101



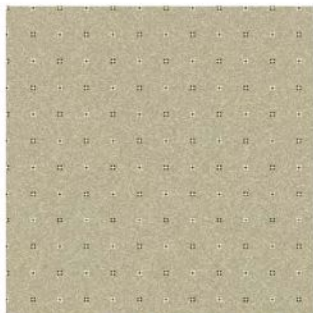
RENKLER  070703101



RENKLER  0802025147



RENKLER  | 1203534017



RENKLER  | 081101301



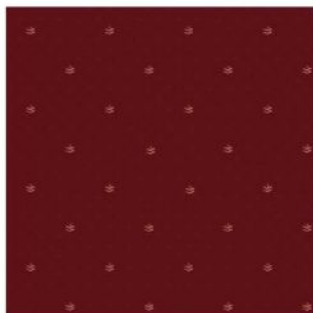
RENKLER  | 1206609017



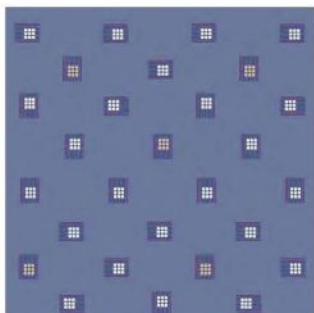
RENKLER  | 1211834067



RENKLER  | 1211829017



RENKLER  | 1212590017



RENKLER  | 110125201



RENKLER  | 110207171



RENKLER  | 0703006047



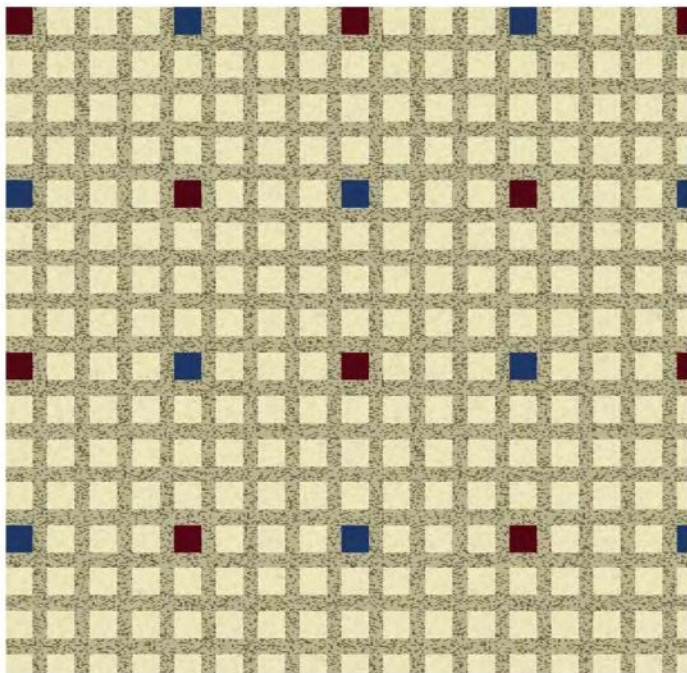
RENKLER  | 0901019057



RENKLER  | 0909009037



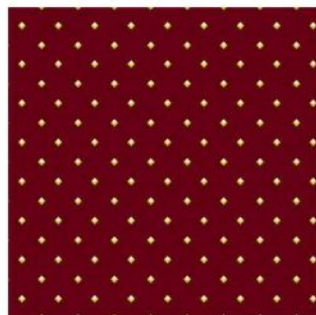
RENKLER  | 1004422067



RENKLER  1202084047



RENKLER  1205765017



RENKLER  1207007017



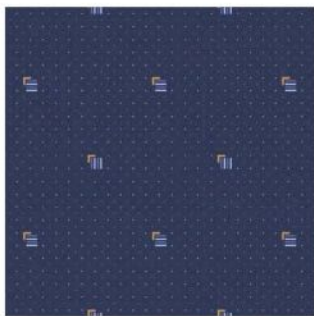
RENKLER  | 100445301



RENKLER  | 0907138027



RENKLER  | 1004428037



RENKLER  0812004057



RENKLER  0812005027



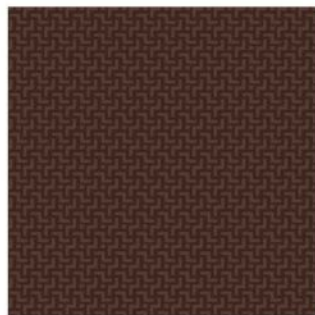
RENKLER  0901029157



RENKLER  1111044012



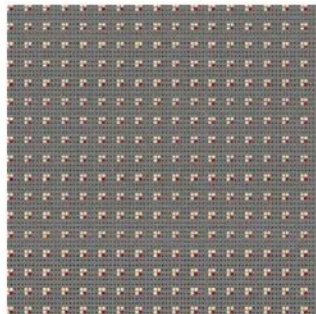
RENKLER  1112157047



RENKLER  1211826017



RENKLER  | 070700601



RENKLER  | 090511701



RENKLER  | 100213271



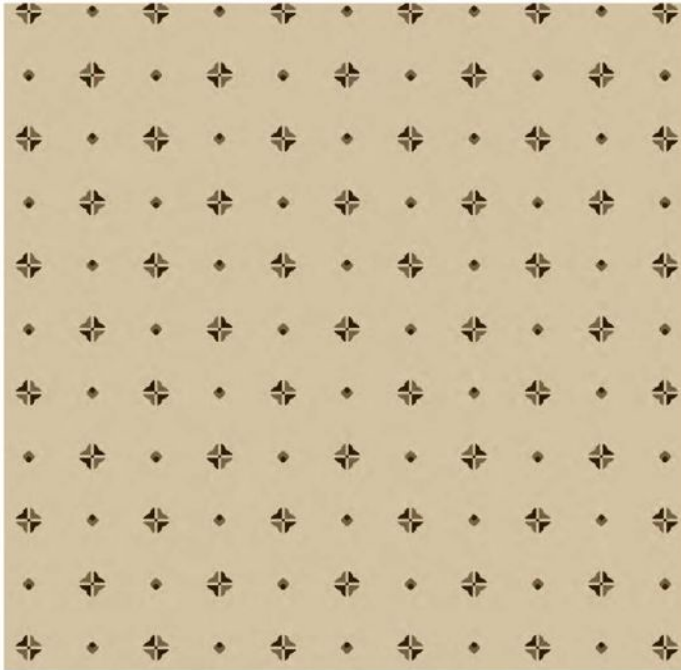
RENKLER  | 100451602



RENKLER  | 101201607



RENKLER  | 100409901



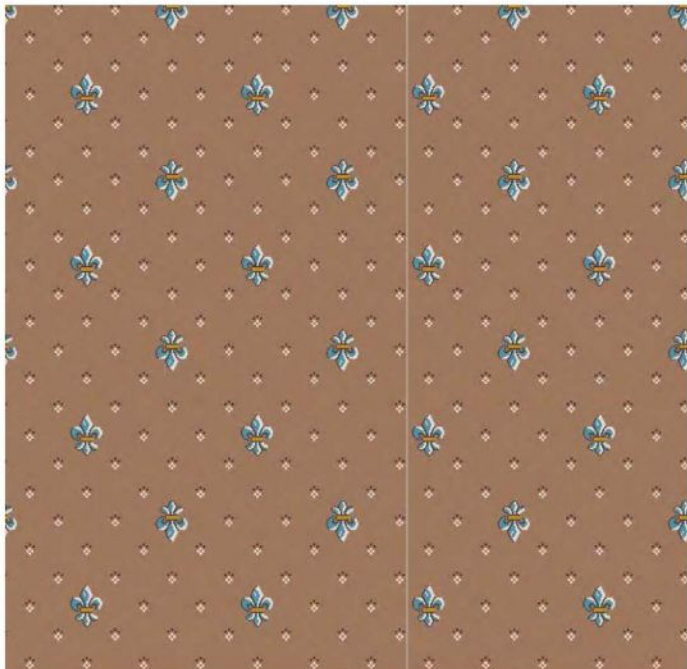
RENKLER  1112188027



RENKLER  1112161027



RENKLER  1205046017



RENKLER  0703006067



RENKLER  0705037087



RENKLER  0705037117



RENKLER | 110201271



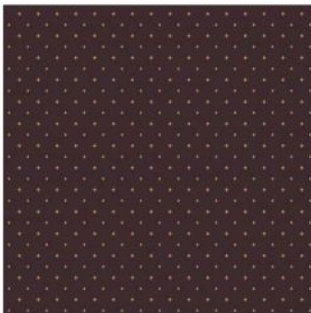
RENKLER | 110255773



RENKLER | 1205768047



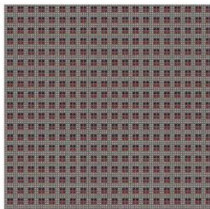
RENKLER | 1206022037



RENKLER | 1206594037



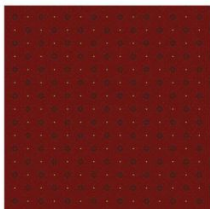
RENKLER | 1206595067



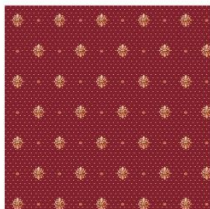
RENKLER  | 1111043042



RENKLER  | 1111044022



RENKLER  | 1112158037



RENKLER  | 070703503



RENKLER  | 1112159087



RENKLER  | 0802015077



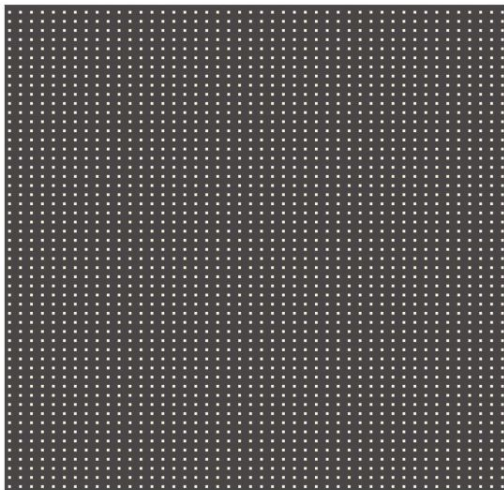
RENKLER  | 0707030037



RENKLER  | 0801023027



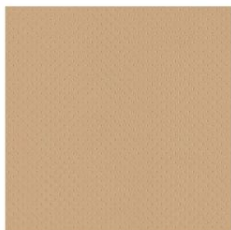
RENKLER  | 1012114017



RENKLER ■ 100704201



RENKLER ■ 1106028011



RENKLER ■ 1110583167



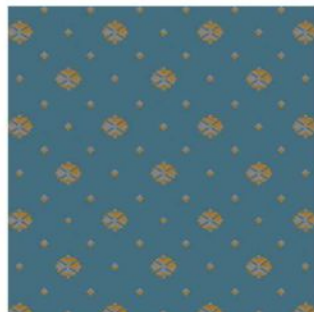
RENKLER  | 1112594117



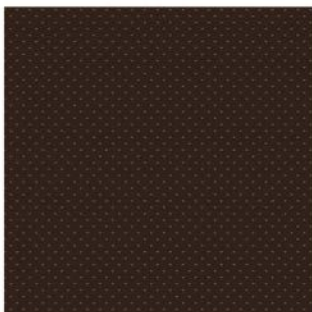
RENKLER  | 1112610037



RENKLER  | 070700603



RENKLER  | 1201246027



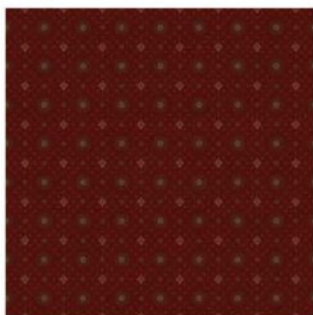
RENKLER  | 1202671017



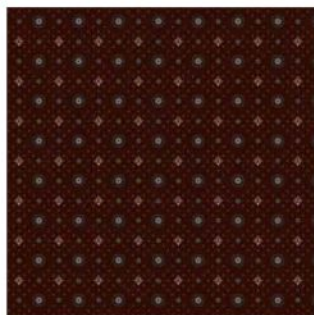
RENKLER  | 1205767027



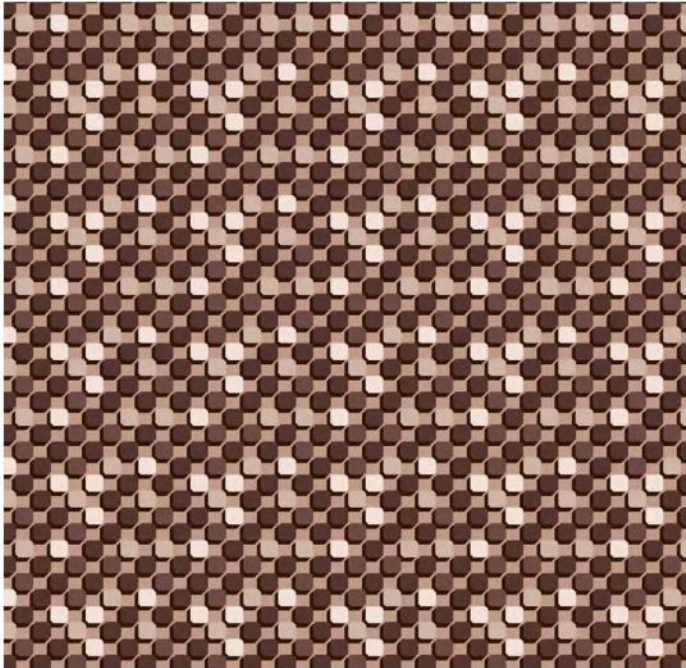
RENKLER  | 1112161077



RENKLER  | 1112162057



RENKLER  | 1112162087



RENKLER | 1107114017



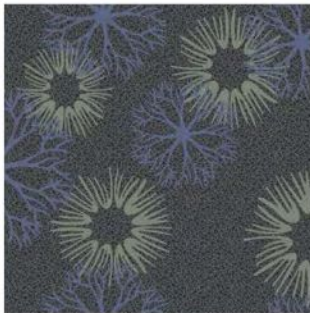
RENKLER | 1112162107



RENKLER | 1112531017



RENKLER  1205731017



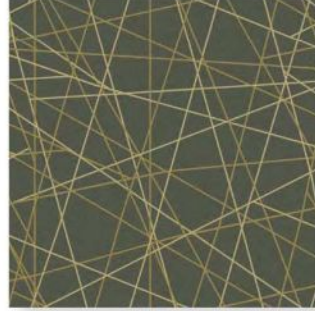
RENKLER  1206600017



RENKLER  1208512017



RENKLER ■■■ | 1212545037



RENKLER ■■■ | 070801302



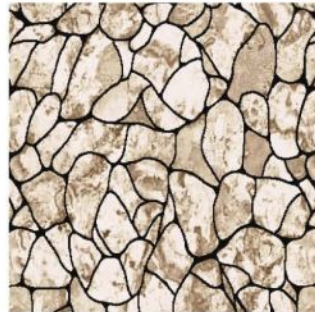
RENKLER ■■■ | 071100703



RENKLER ■■■ | 090410471



RENKLER ■■■ | 090509201



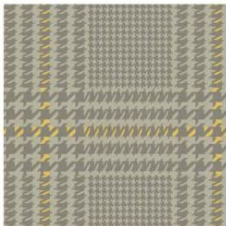
RENKLER ■■■ | 090702501



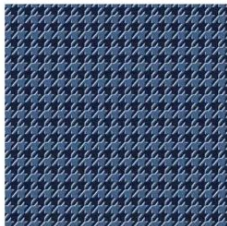
RENKLER  | 101209001



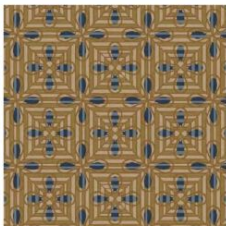
RENKLER  | 110361804



RENKLER  | 090703801-5601a



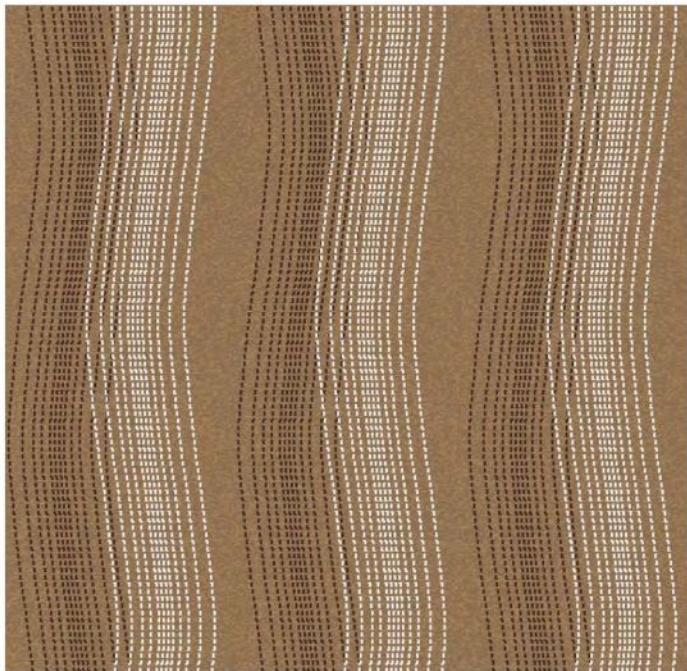
RENKLER  | 1211947107



RENKLER  | 091204601



RENKLER  | 1211828027



RENKLER  100102301



RENKLER  100102401

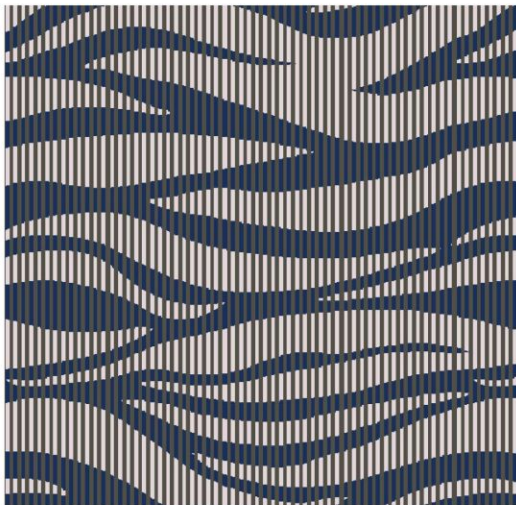


RENKLER    100106801



Kontrat Hali | Renk ahenk
Contract Carpet | Harmony of colours





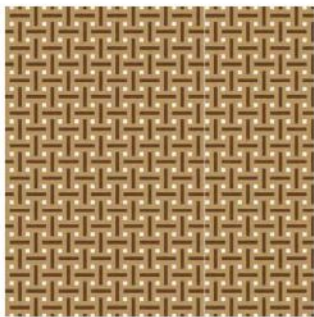
RENKLER  100303605



RENKLER  100203702



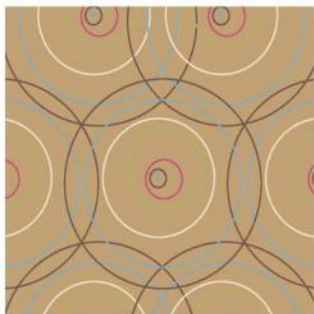
RENKLER  100203701



RENKLER  | 100403201



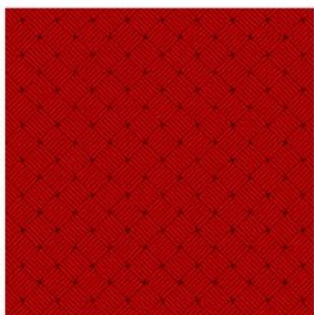
RENKLER  | 100404102



RENKLER  | 100414201



RENKLER  | 100416901



RENKLER  | 100449701



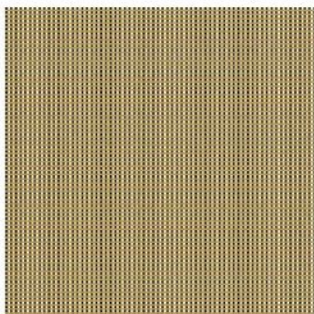
RENKLER  | 100454001



RENKLER  | 100454601



RENKLER  | 100502401



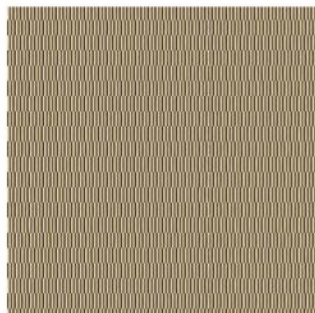
RENKLER  | 100504501



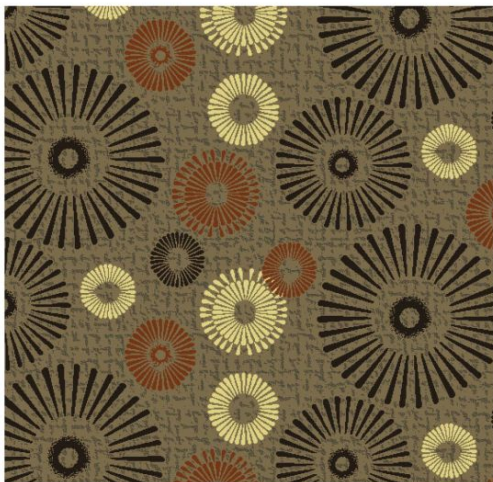
RENKLER  | 100600702-KB



RENKLER  | 100600702



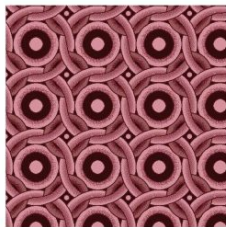
RENKLER  | 100701601



RENKLER  100710801



RENKLER  100909801



RENKLER  101003501



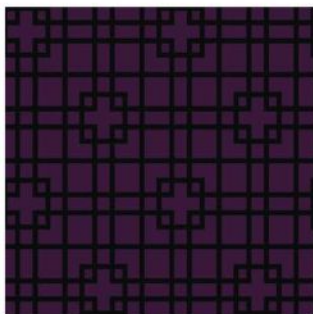
RENKLER  101003601



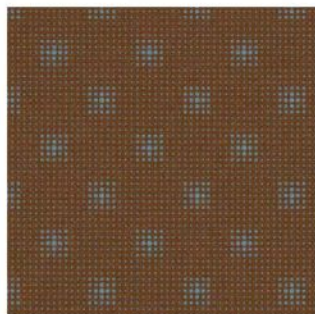
RENKLER  101003701



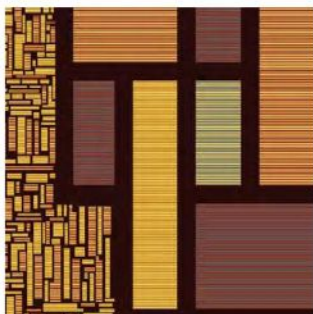
RENKLER  1210002027



RENKLER ■ | 101017231



RENKLER ■ ■ | 101018101



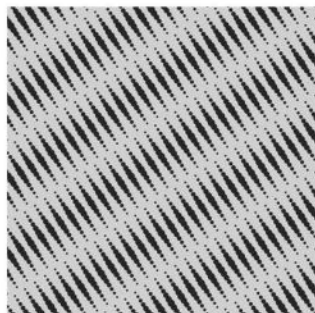
RENKLER ■ ■ ■ | 101100704



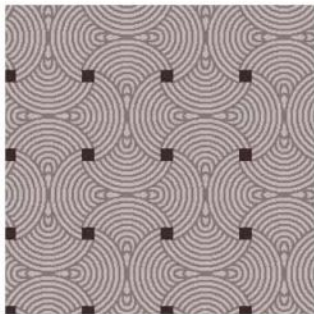
RENKLER ■ ■ ■ ■ ■ | 101115805



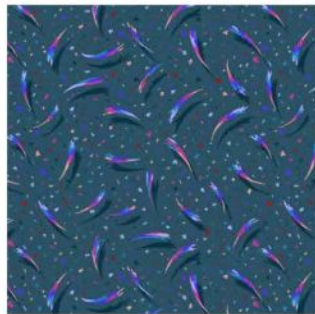
RENKLER ■ ■ | 101201901



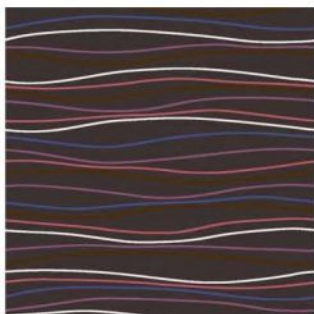
RENKLER ■ ■ | 1211926027



RENKLER  | 110103205



RENKLER  | 110106901



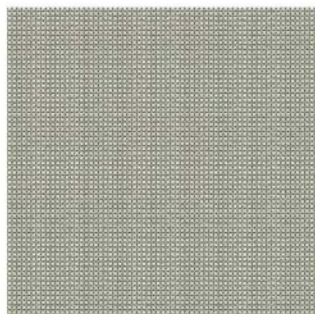
RENKLER  | 110110501



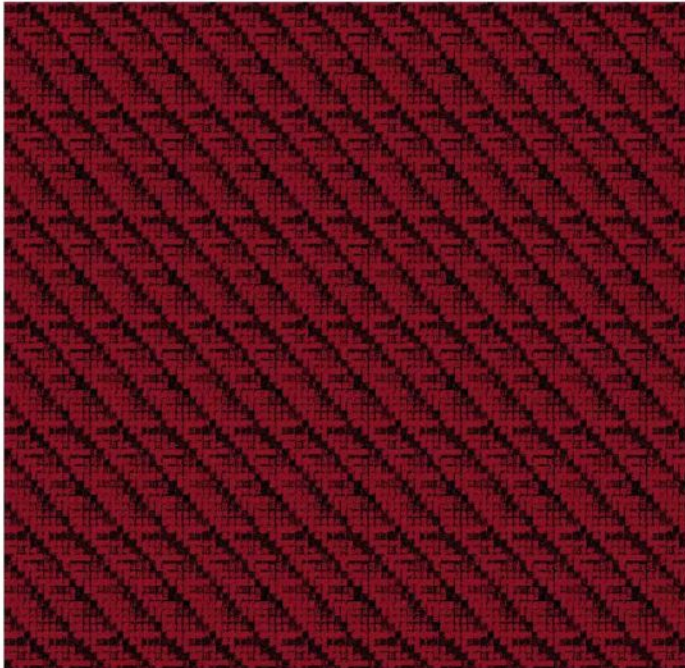
RENKLER  | 110114701



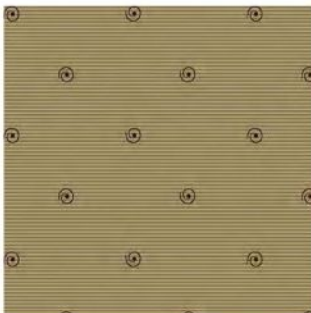
RENKLER  | 110115209



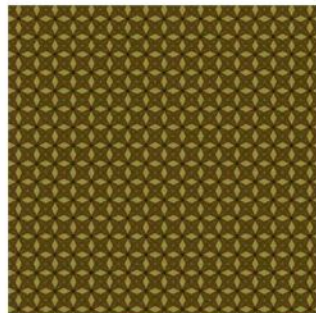
RENKLER  | 110131301



RENKLER ■ 110210471



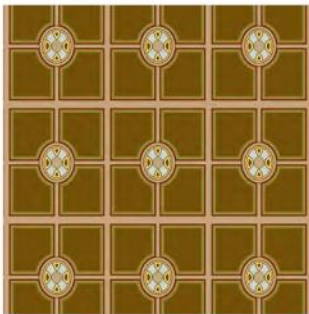
RENKLER ■ 110206175



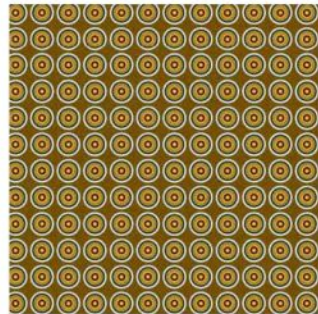
RENKLER ■ 110203371



RENKLER  110305071



RENKLER  110303171



RENKLER  110303071



RENKLER ■ | 1211839037



RENKLER ■ ■ | 090104302



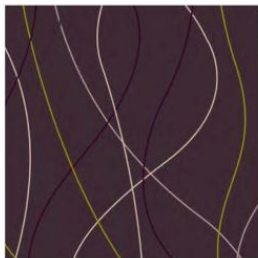
RENKLER ■ ■ ■ | 101005503



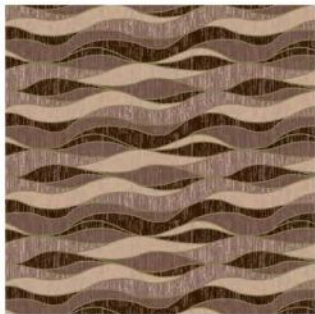
RENKLER ■ ■ ■ | 110307472



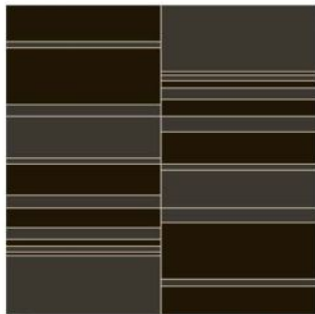
RENKLER ■ ■ ■ | 110307475



RENKLER ■ ■ ■ | 110306472



RENKLER  | 110312871



RENKLER  | 110353071



RENKLER  | 110353679



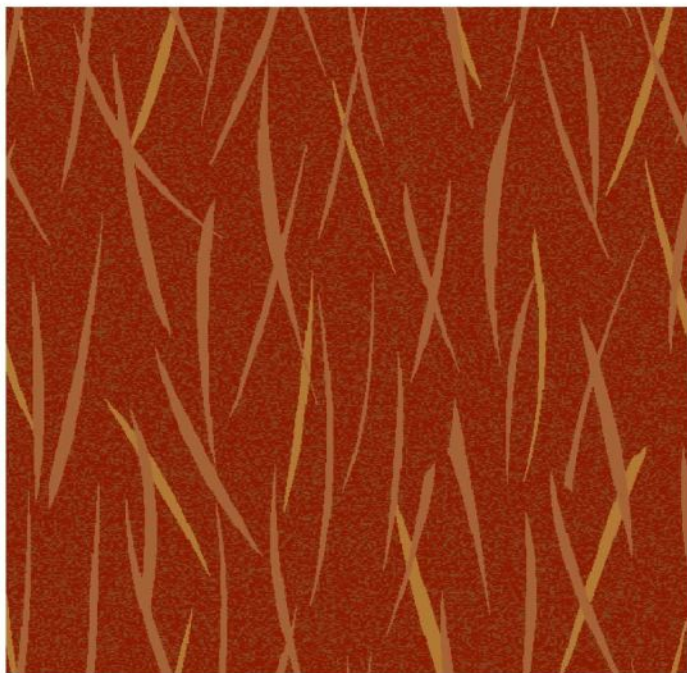
RENKLER  | 110353680



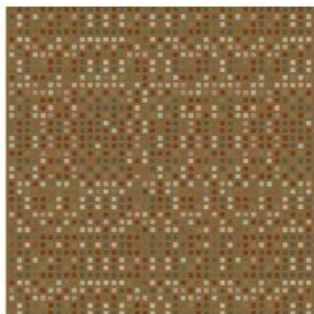
RENKLER  | 110356271



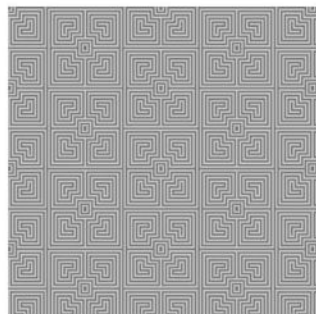
RENKLER  | 110362574



RENKLER  | 110364006




RENKLER  | 110364272



RENKLER  | 110364371



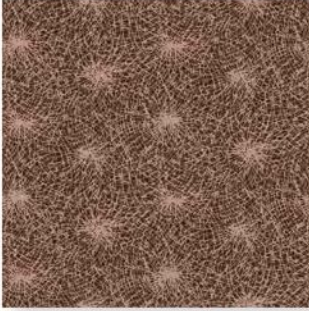
RENKLER  110364571



RENKLER  110311771



RENKLER  120316301



RENKLER  0702008127



RENKLER  0707039047



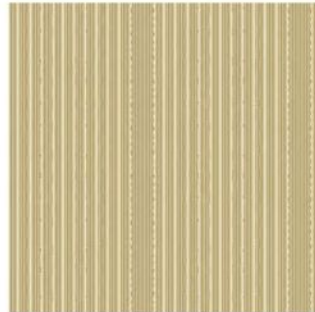
RENKLER  0707042047



RENKLER  0710021107



RENKLER  0804014087



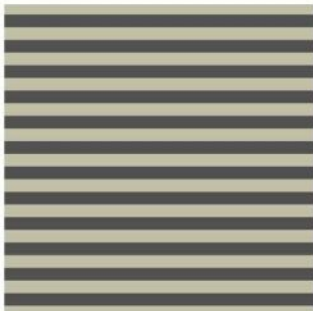
RENKLER  0901022027



RENKLER  | 0901030047



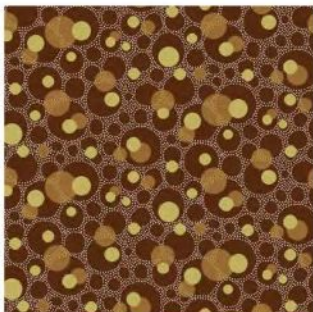
RENKLER  | 0903047047



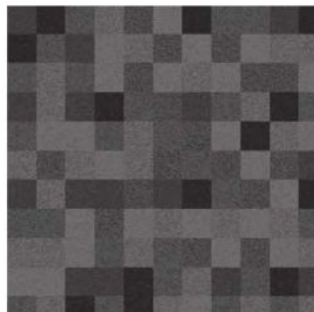
RENKLER  | 1211558017



RENKLER  | 1004279027



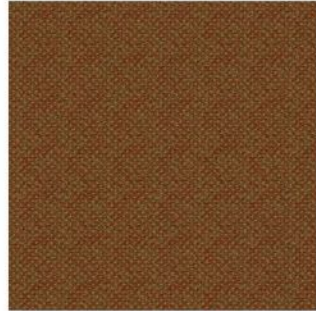
RENKLER  | 1004414017



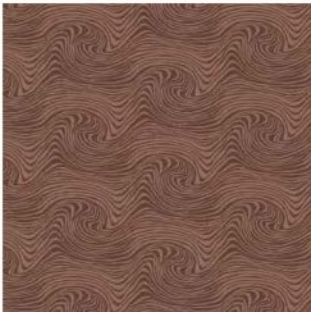
RENKLER  | 1004587017



RENKLER | 1012034011



RENKLER | 1012114027



RENKLER | 1102538307



RENKLER | 1004269047



RENKLER | 1104122027



RENKLER | 1105046017



RENKLER  | 1105066217



RENKLER  | 1105099017



RENKLER  | 1105150017



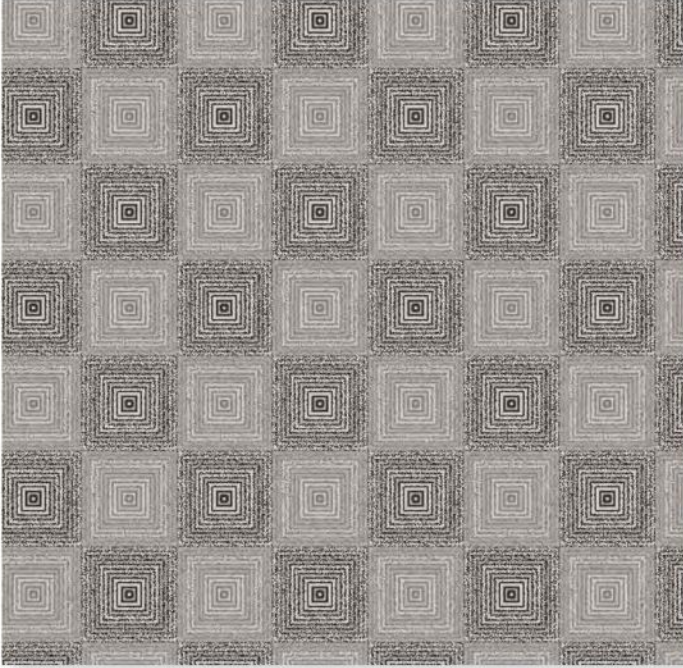
RENKLER  | 1106029021



RENKLER  | 1106059011



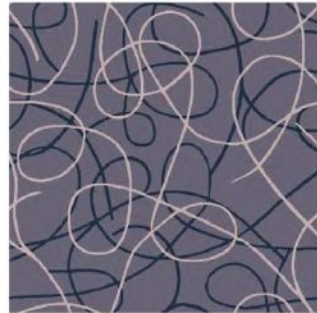
RENKLER  | 1106063017



RENKLER [] 1211845027



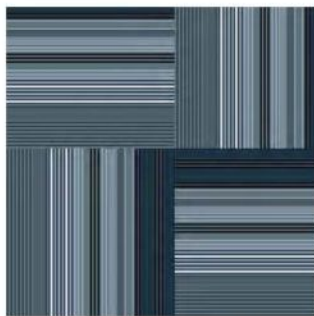
RENKLER [] 1107100027




RENKLER [] 1107063011



RENKLER  | 1106213037



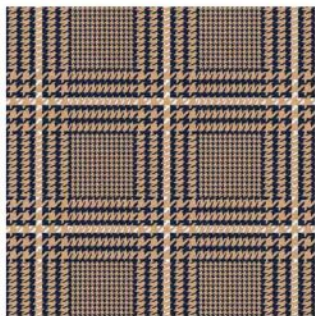
RENKLER  | 1107024017



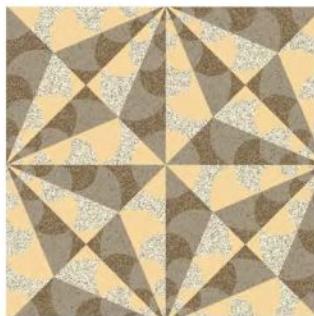
RENKLER  | 1107031021



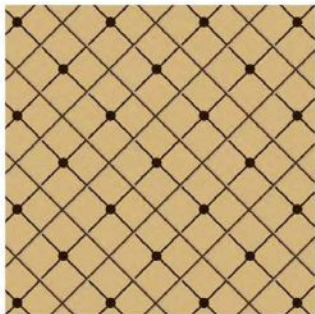
RENKLER  | 1107060037



RENKLER  | 1212539047



RENKLER  | 1107061037



RENKLER  | 1106124021



RENKLER  | 1106126011



RENKLER  | 1106127011



RENKLER  | 1211840057



RENKLER  | 1106201017



RENKLER  | 1106207011



Kontrat Hali | Renk ahenk
Contract Carpet | Harmony of colours





RENKLER  1107120032



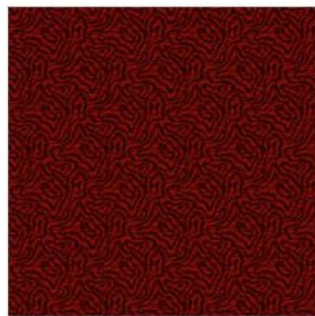
RENKLER  1107116022



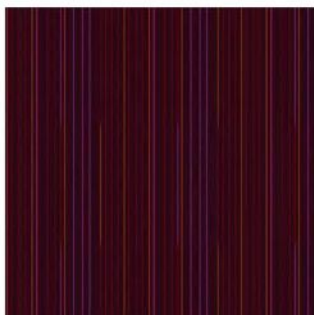
RENKLER  1107122032



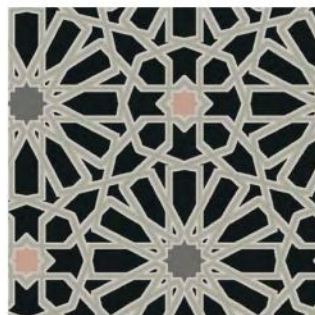
RENKLER  | 1107124012



RENKLER  | 1107130047



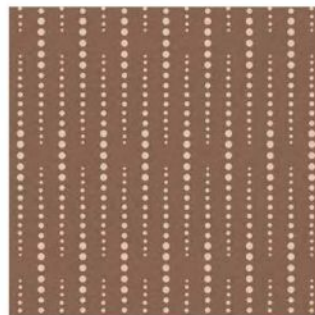
RENKLER  | 1107502011



RENKLER  | 1107540011



RENKLER  | 1108021017



RENKLER  | 1211825027



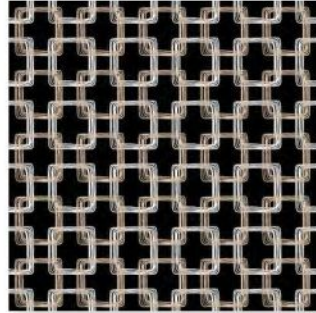
RENKLER  | 1208958057



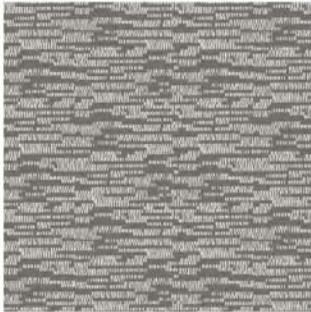
RENKLER  | 1108042027



RENKLER  | 1108072027



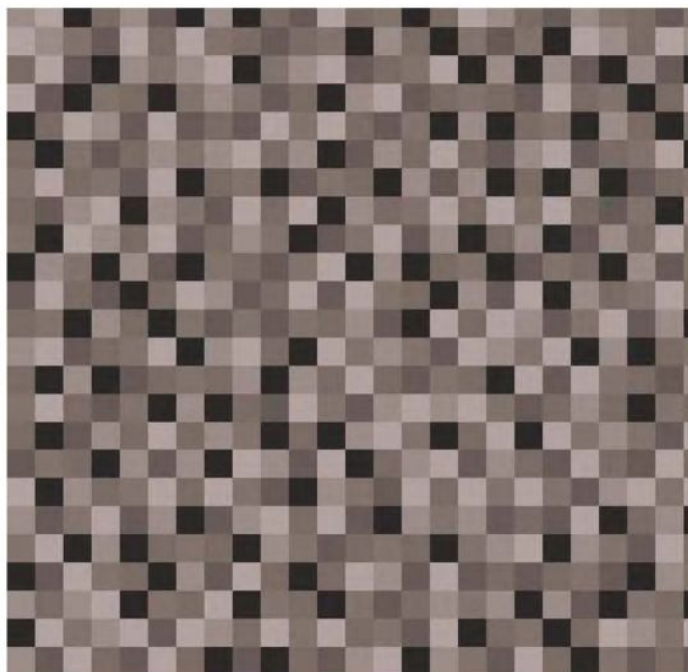
RENKLER  | 1108509077



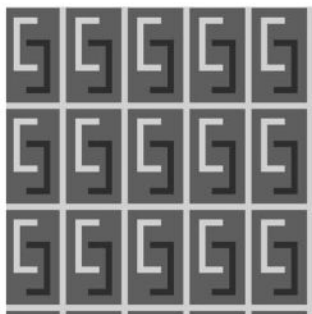
RENKLER  | 1109005017



RENKLER  | 1109065017



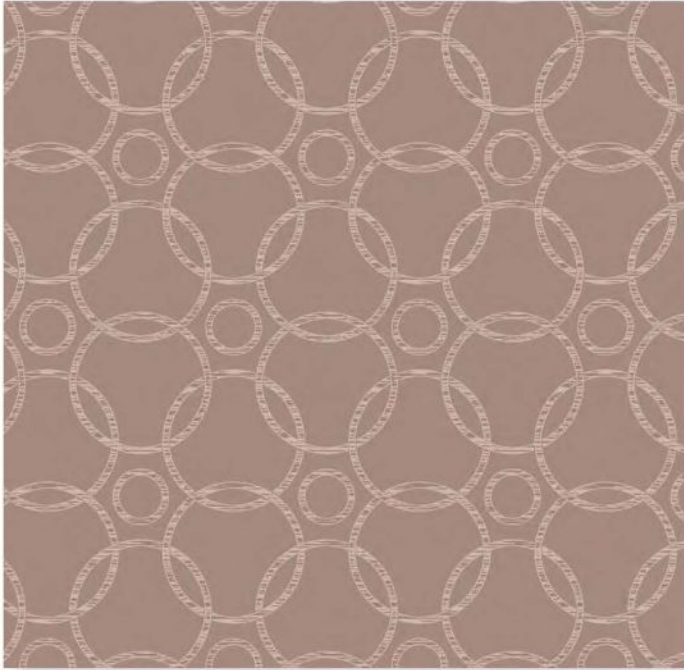
RENKLER  | 1212564067



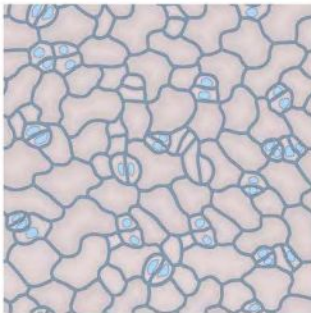
RENKLER  | 1109595017



RENKLER  | 1109501017



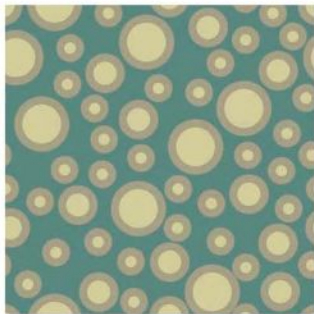
RENKLER  | 1109601937



RENKLER  | 1110054037



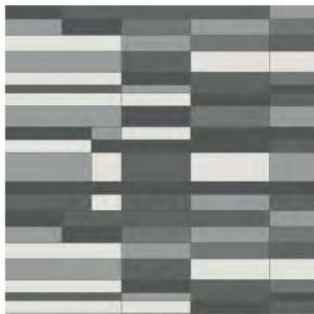
RENKLER  | 1211844037



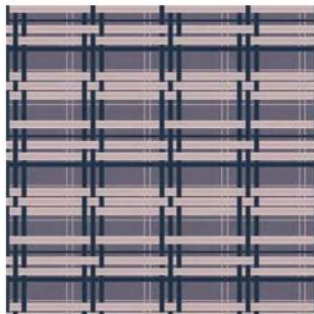
RENKLER  | 1110056017



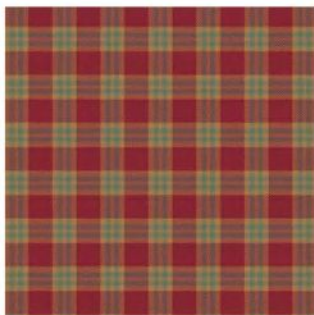
RENKLER  | 1211963017



RENKLER  | 1110069027



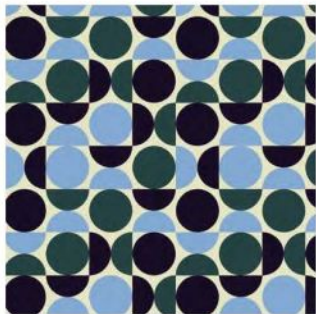
RENKLER  | 1110088027



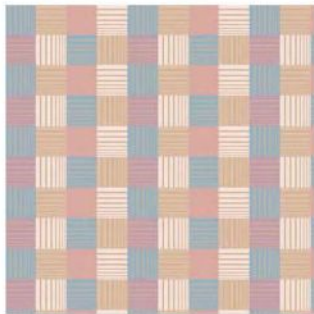
RENKLER  | 1110095027



RENKLER  | 1110502627



RENKLER  | 1110513017



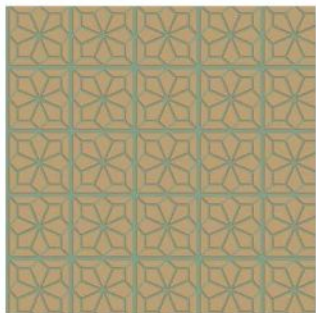
RENKLER  | 1110514147



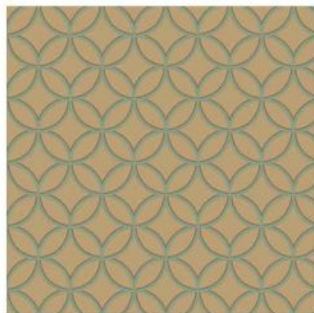
RENKLER  | 1111090017



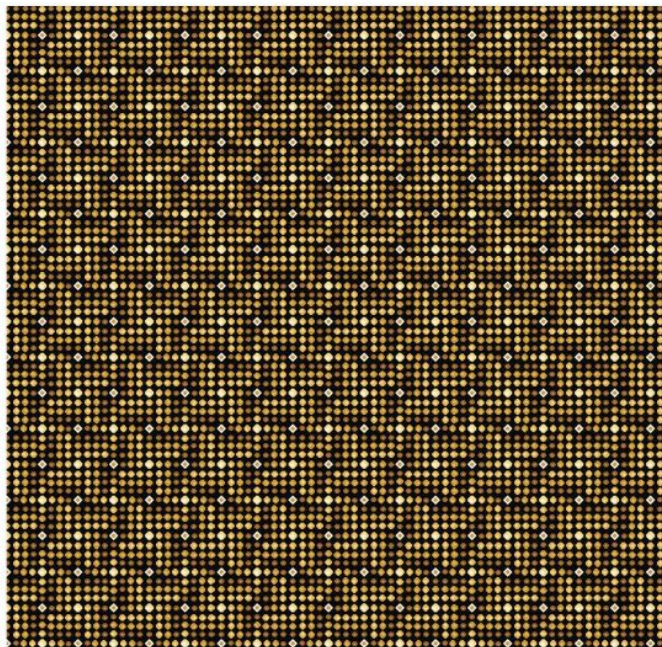
RENKLER  | 1110522037



RENKLER  | 1111002017



RENKLER  | 1111003017



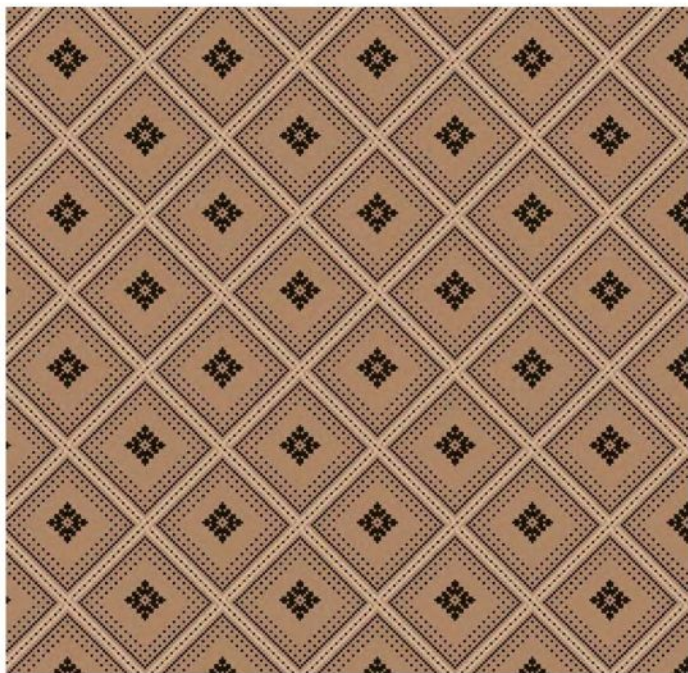
RENKLER | 1111048022



RENKLER | 1111045012



RENKLER | 1208956027



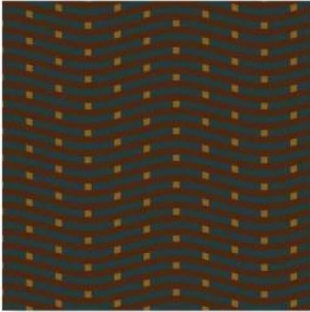
RENKLER  1111508277




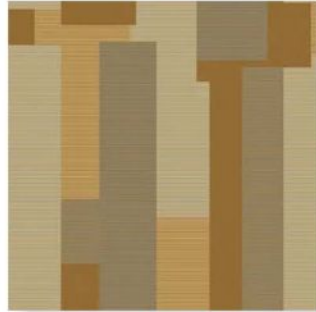
RENKLER  1112197017



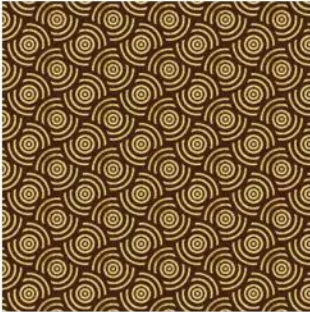
RENKLER  1112291017



RENKLER  | 1112292017



RENKLER  | 1112515017



RENKLER  | 1112614027



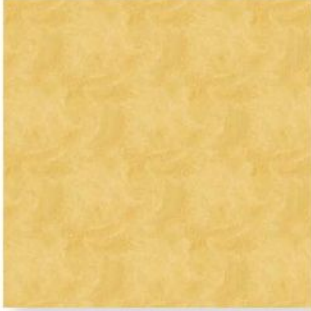
RENKLER  | 1112616057



RENKLER  | 1112661017



RENKLER  | 1112662147



RENKLER  | 1201022017



RENKLER  | 1201085017



RENKLER  | 1201115017



RENKLER  | 1201115027



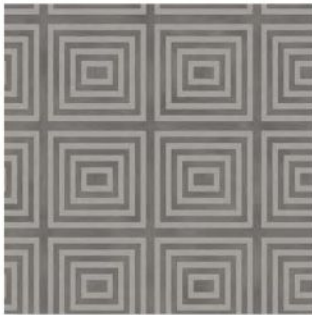
RENKLER  | 1201123017




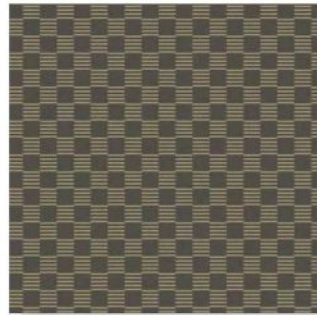
RENKLER  | 1201137017



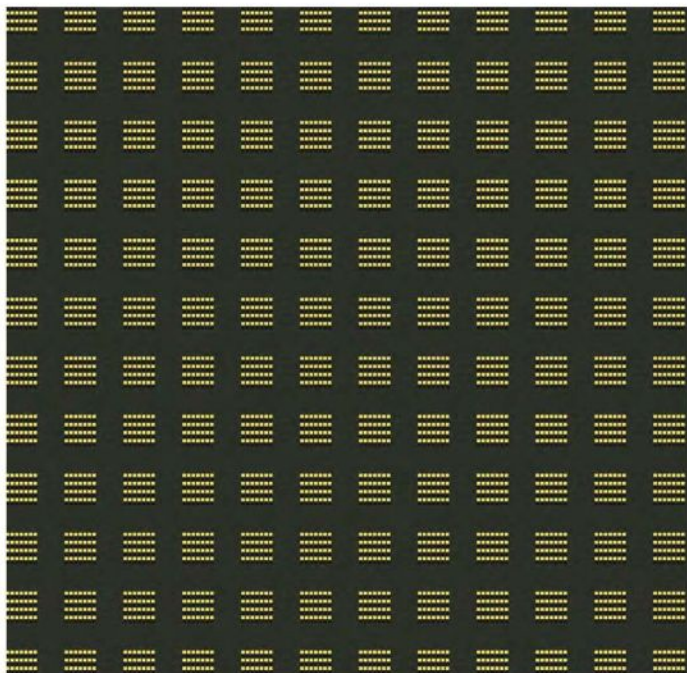
RENKLER  | 1201154017



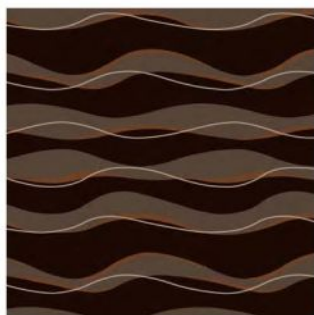
RENKLER  | 1201155017



RENKLER  | 1201157017



RENKLER  1201164017



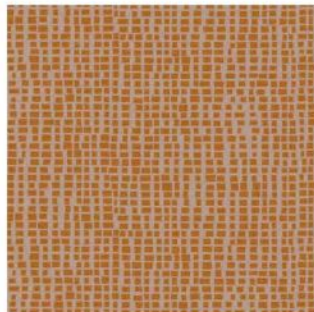
RENKLER  1201166017



RENKLER  1201167017



RENKLER ■ 1201174017



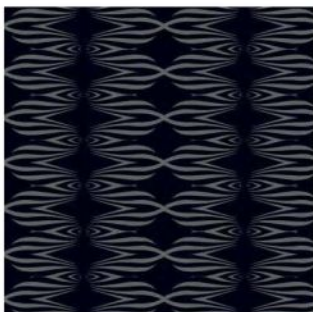
RENKLER ■ 1201175017



RENKLER ■ 1201223027



RENKLER ■ 1201230017



RENKLER ■ 1201255027



RENKLER ■ 1201264017



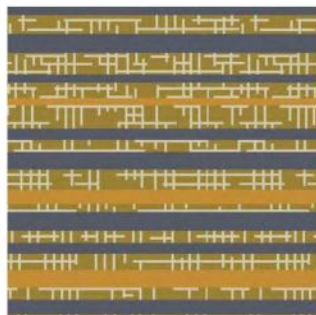
RENKLER  | 1201508017



RENKLER  | 100461901



RENKLER  | 1201573017



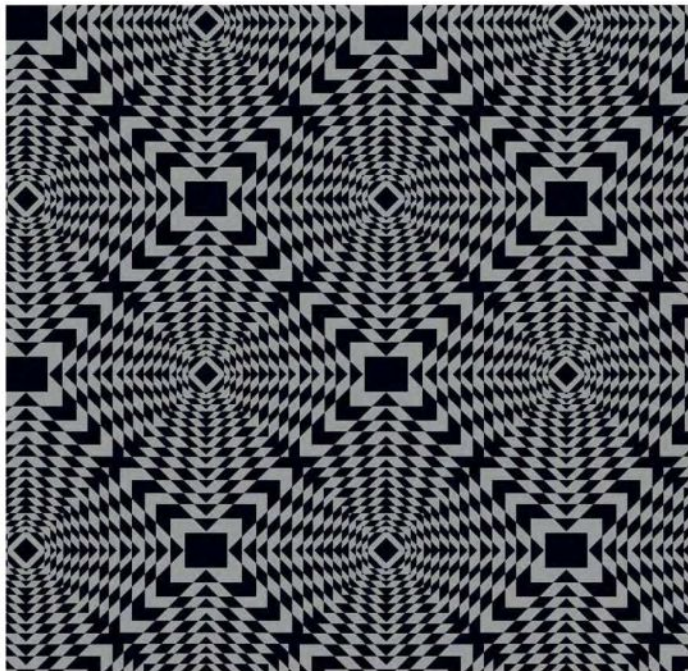
RENKLER  | 1201671017



RENKLER  | 1202040017



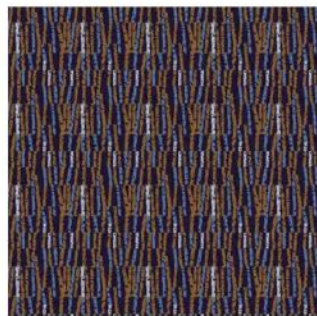
RENKLER  | 1202041017



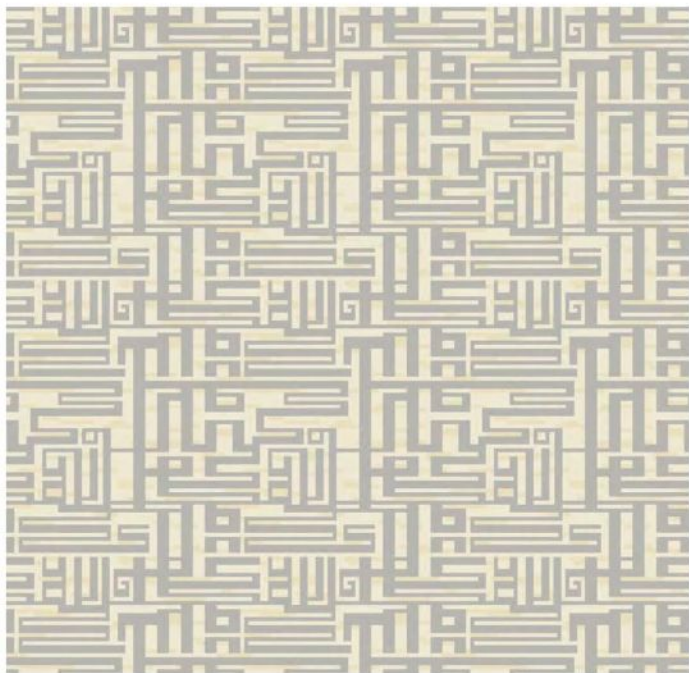
RENKLER ■ 1202059017



RENKLER ■ 1202058017



RENKLER ■ 1202074017



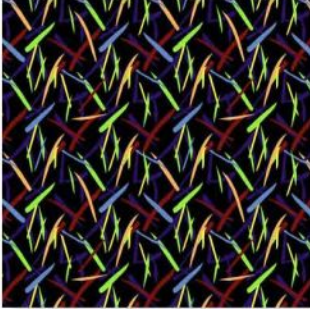
RENKLER  | 1202117017



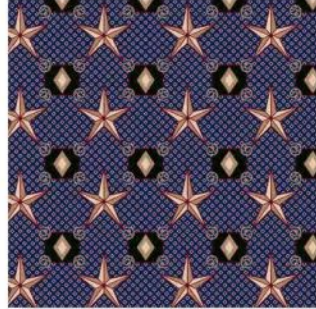
RENKLER  | 1202134017



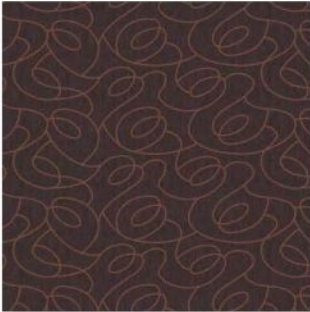
RENKLER  | 1202166057



RENKLER | 1202183017



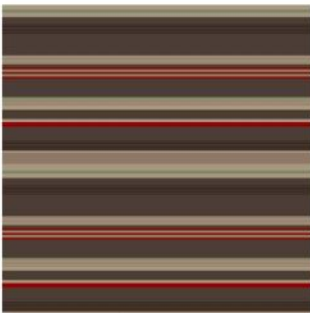
RENKLER | 1202193037



RENKLER | 1203154017



RENKLER | 1203510017



RENKLER | 1203523017



RENKLER | 1203524017



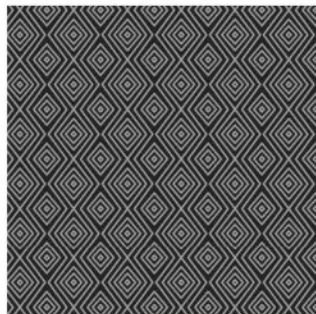
RENKLER  | 1203532017



RENKLER  | 1203594017



RENKLER  | 1204004017



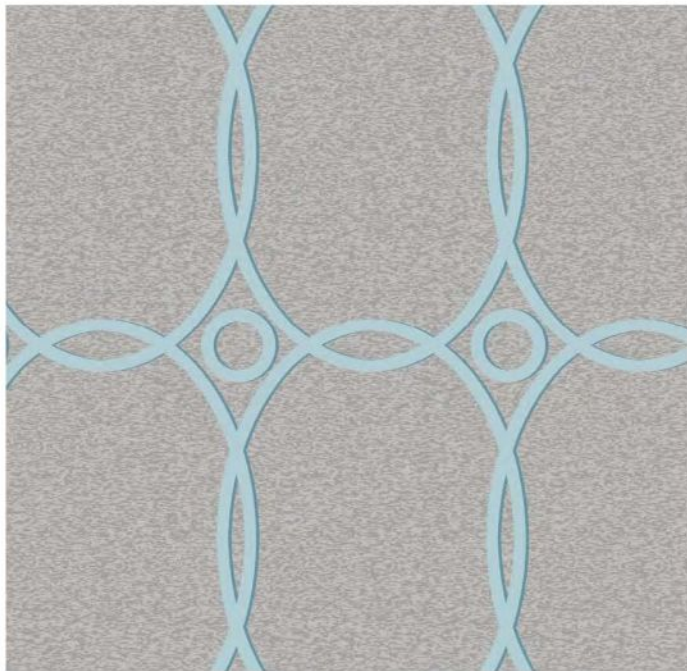
RENKLER  | 1204005017



RENKLER  | 1204006017



RENKLER  | 1204052057



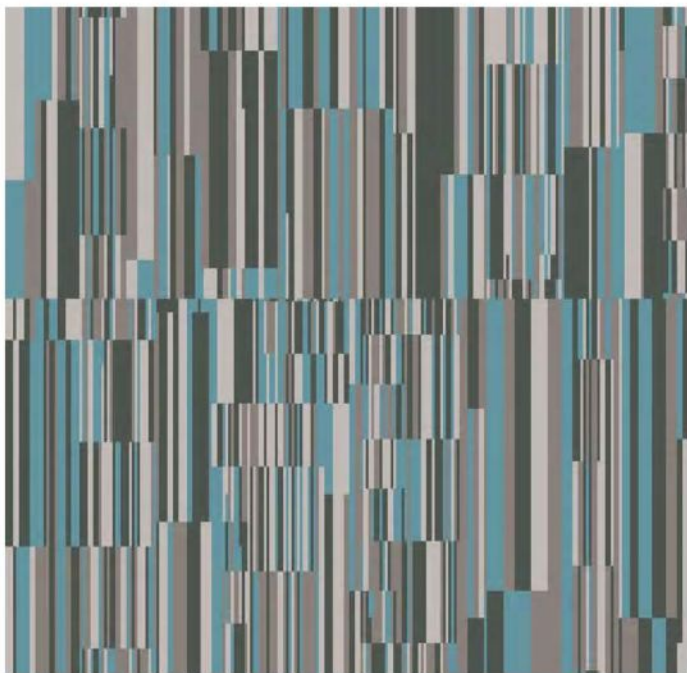
RENKLER  1204055027



RENKLER  1204082027



RENKLER  1204082047



RENKLER | 1204655017



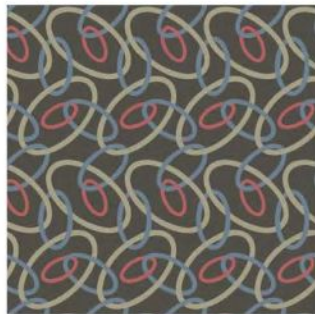
RENKLER | 1204083017



RENKLER | 1204621017



RENKLER  | 1205043017



RENKLER  | 1205075017



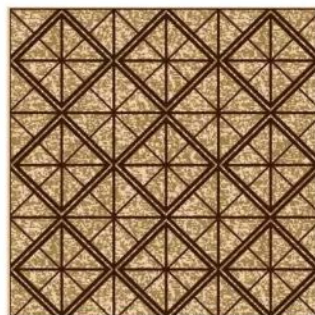
RENKLER  | 1107520017



RENKLER  | 1107507017



RENKLER  | 1205085017



RENKLER  | 1205086017



RENKLER  | 1206028017



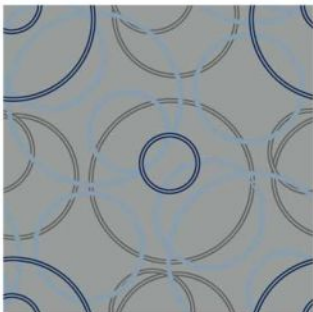
RENKLER  | 1206029027



RENKLER  | 1206037017



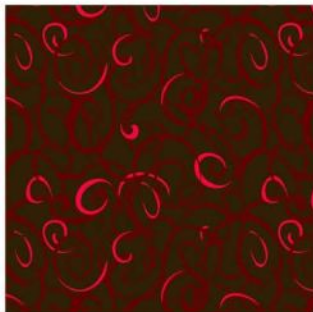
RENKLER  | 1206670027



RENKLER  | 1207063017



RENKLER  | 1207063027



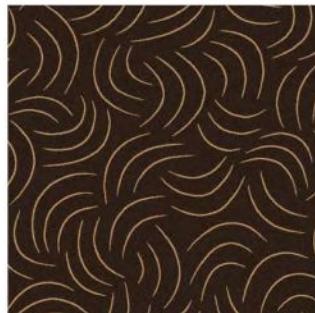
RENKLER  | 110116802



RENKLER  | 100412501




RENKLER  | 110363711



RENKLER  | 0711020197



RENKLER  | 1205730037



RENKLER  | 1207072027



Kontrat Hali
Contract Carpet

Renk ahenk
Harmony of colours





RENKLER  070703604



RENKLER  070300201



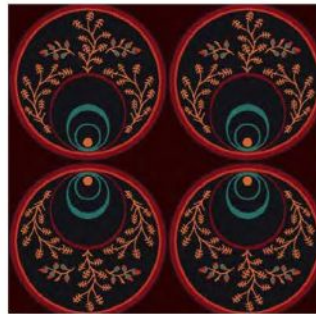
RENKLER  070700301



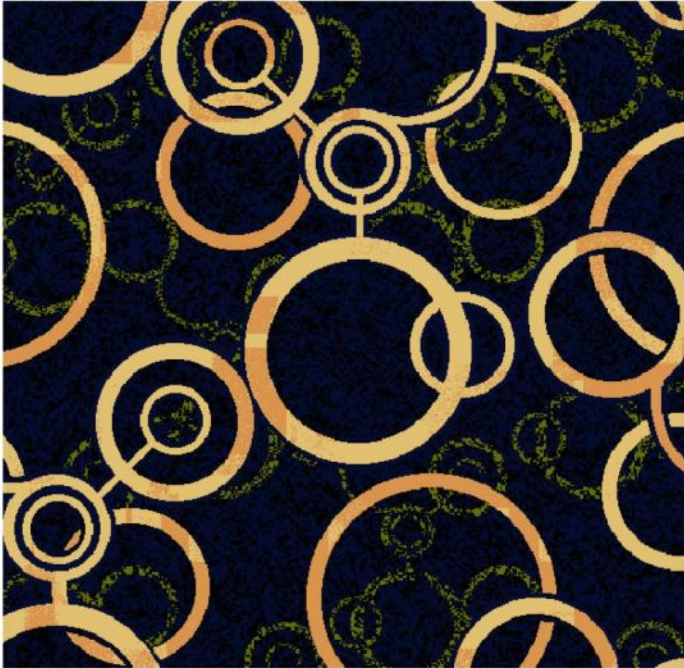
RENKLER  090211101



RENKLER  090405903



RENKLER  091110001



RENKLER  100407701



RENKLER  100421701



RENKLER  100424701



RENKLER | 100432201



RENKLER | 110125301



RENKLER | 100600801



RENKLER | 100605701



RENKLER | 101200701



RENKLER | 101217703



RENKLER | 1204511027



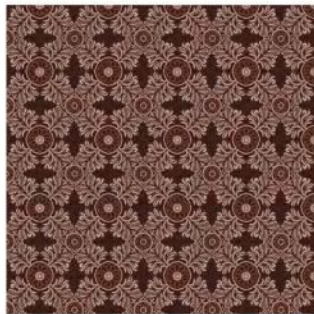
RENKLER | 110208671



RENKLER | 110302771



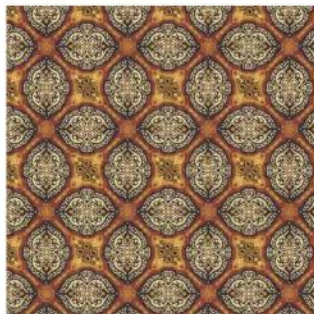
RENKLER  | 110302871



RENKLER  | 0703009067



RENKLER  | 0705036087



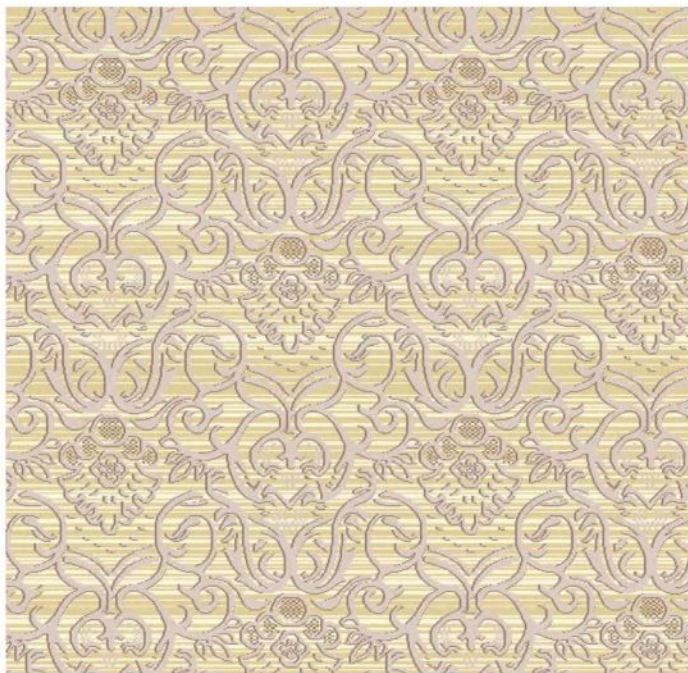
RENKLER  | 1004120027



RENKLER  | 1004381037



RENKLER  | 1106026011



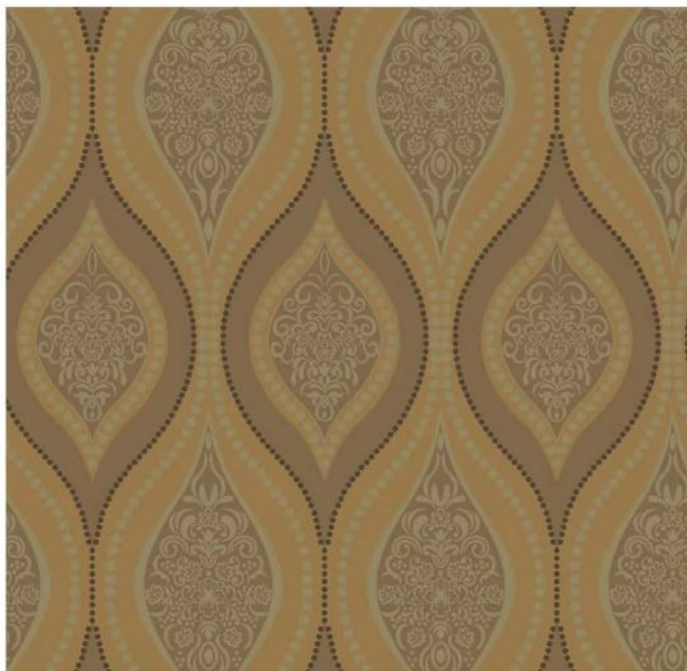
RENKLER ■■■ 1205045017



RENKLER ■■■ 1205503017



RENKLER ■■■ 1205515037



RENKLER  | 1207102037



RENKLER  | 1207012027



RENKLER  | 1206033047



RENKLER ■■■ | 1202695017



RENKLER ■■■ | 0912229027



RENKLER ■■■ | 1204030017



RENKLER ■■■ | 1204538047



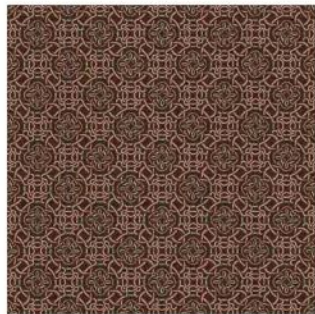
RENKLER ■■■ | 1204641017



RENKLER ■■■ | 1003174117



RENKLER  | 1106223011



RENKLER  | 1107115012



RENKLER  | 1107123012



RENKLER  | 1107125012



RENKLER  | 1107127012



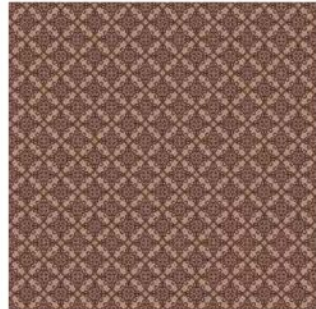
RENKLER  | 1108029017



RENKLER  | 1202036017



RENKLER  | 1101153067



RENKLER  | 1112160037



RENKLER  1202712017



RENKLER  0912098117



RENKLER  1003119087



RENKLER | 070200904



RENKLER | 080702202



RENKLER | 0907121027



RENKLER | 0907083027



RENKLER | 1108112037



RENKLER | 1204512027



RENKLER  070501402



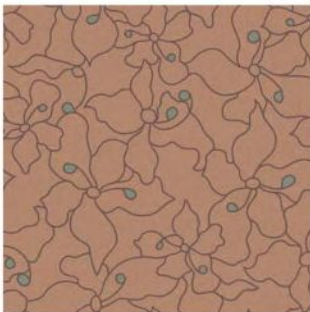
RENKLER  091003902



RENKLER  1202135017



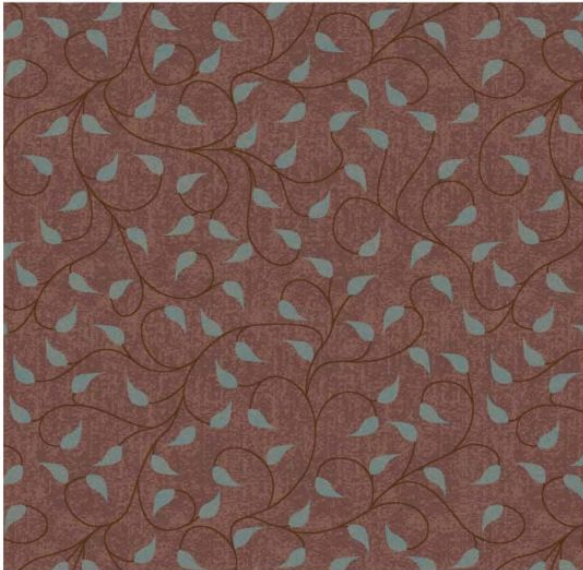
RENKLER  1106058017



RENKLER  1105101017



RENKLER  0901055077



RENKLER  110310771



RENKLER  1004483011



RENKLER  101104701



RENKLER  091220604



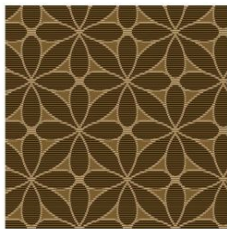
RENKLER  1110519147



RENKLER  1108027017



RENKLER | 101206101



RENKLER | 101209101



RENKLER | 101213301



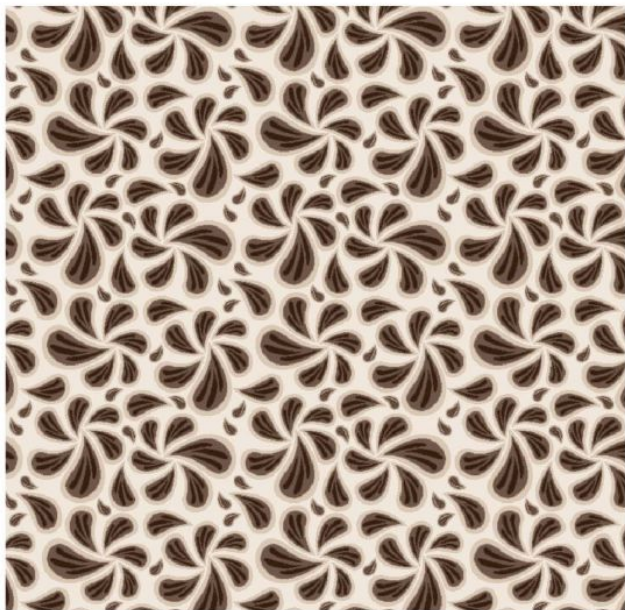
RENKLER | 101213801



RENKLER | 110125002



RENKLER | 110251976



RENKLER  1107119032



RENKLER  110256176



RENKLER  110363271



RENKLER ■ ■ ■ 1108111017



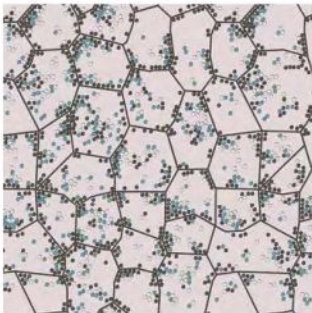
RENKLER ■ ■ ■ 110906017



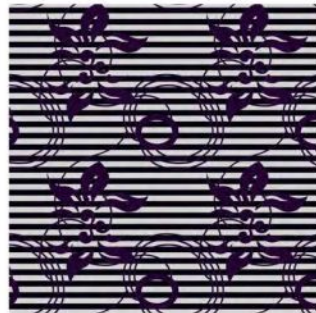
RENKLER ■ ■ ■ ■ ■ 1109064017



RENKLER ■ ■ ■ ■ ■ 1110010027



RENKLER ■ ■ ■ ■ ■ 1110055027



RENKLER ■ ■ ■ ■ ■ 1110073027



RENKLER  | 110253272



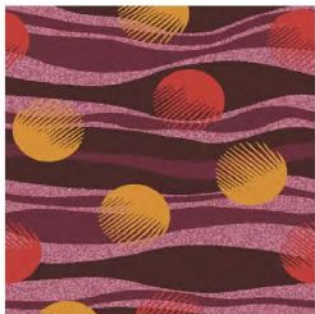
RENKLER  | 110302671



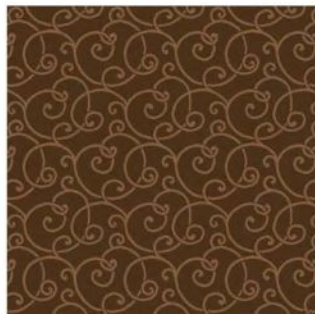
RENKLER  | 1104512017



RENKLER  | 1104525017



RENKLER  | 100460001



RENKLER  | 1110131017



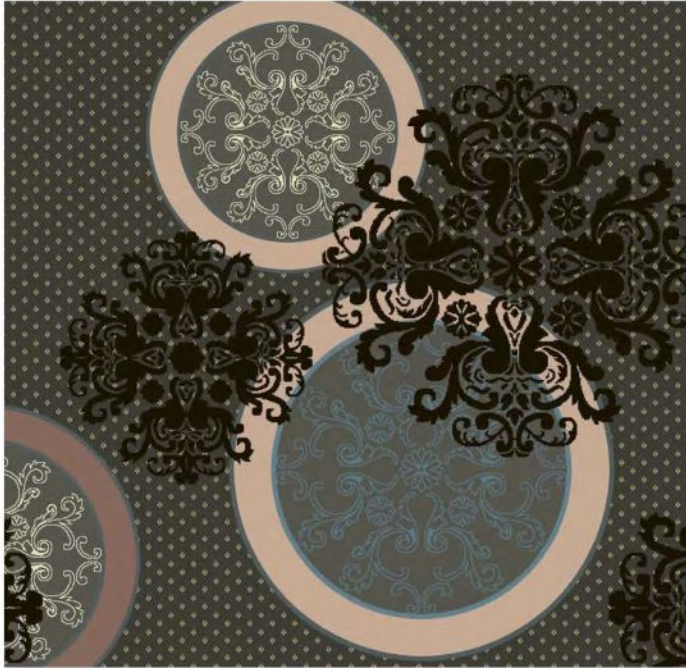
RENKLER ■■■ 1106191011



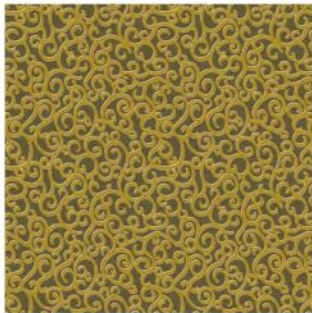
RENKLER ■■ 1106131017



RENKLER ■■ 091221301



RENKLER  1205505037



RENKLER  1112240017



RENKLER  1112611017



RENKLER | 1201114017



RENKLER | 1201114027



RENKLER | 1201122017



RENKLER | 1201156027



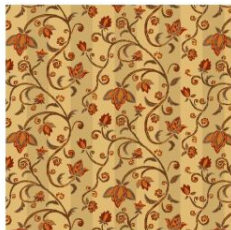
RENKLER | 1203153017



RENKLER | 1203197017



RENKLER  | 1203228057



RENKLER  | 100110401



RENKLER  | 1204056017



RENKLER  | 1204059017



RENKLER  | 1211129027



RENKLER  | 1205044017



RENKLER | 1204063067



RENKLER | 1205049017



RENKLER | 1112196017



Kontrat Hali | Renk ahenk
Contract Carpet | Harmony of colours



Koridor Hali / Corridor Carpet



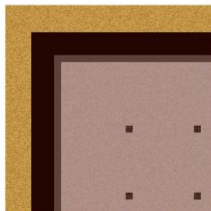
RENKLER  | 100421101



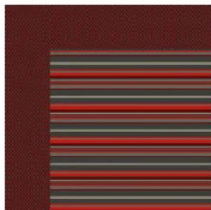
RENKLER  | 100420101



RENKLER  | 100425001



RENKLER  | 091105503



RENKLER  | 100303801



RENKLER  | 100301901



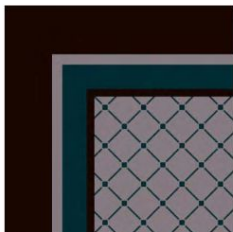
RENKLER | 101202201



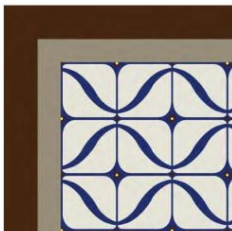
RENKLER | 100213101



RENKLER | 100404301



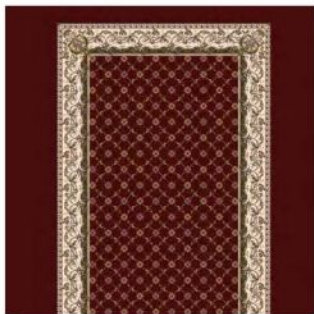
RENKLER | 101111571



RENKLER | 1206003017



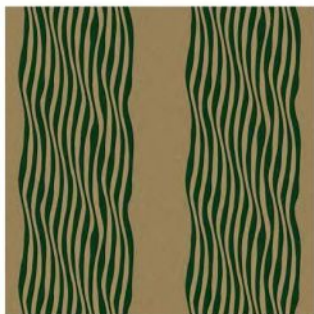
RENKLER | 100514701



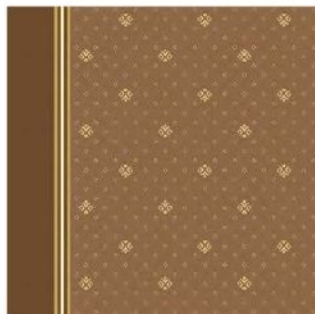
RENKLER  | 1204508037



RENKLER  | 1105164017



RENKLER  | 081100208



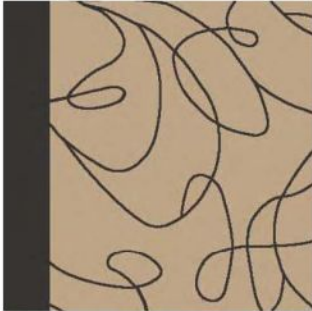
RENKLER  | 100436401



RENKLER  | 1112189017



RENKLER  | 1204012017



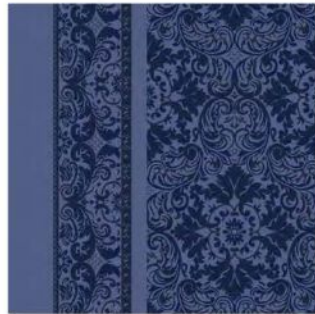
RENKLER ■ ■ | 090902102



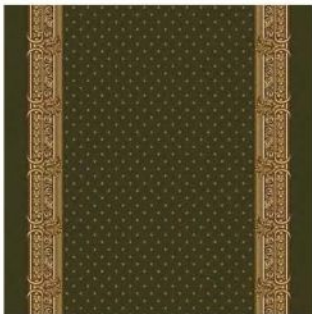
RENKLER ■ ■ | 100417002



RENKLER ■ ■ ■ ■ ■ ■ ■ ■ ■ ■ | 1203601017-4x10



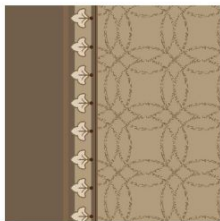
RENKLER ■ ■ ■ ■ ■ ■ ■ ■ ■ ■ | 1203604037-4x22



RENKLER ■ ■ ■ ■ ■ ■ ■ ■ ■ ■ | 1203616037-4x11



RENKLER ■ ■ ■ ■ ■ ■ ■ ■ ■ ■ | 1202042037



RENKLER  | 100213101



RENKLER  | 110308271



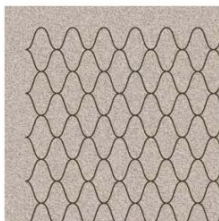
RENKLER  | 1204730017



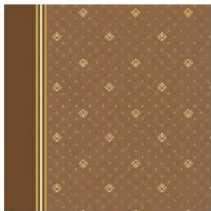
RENKLER  | 100450701



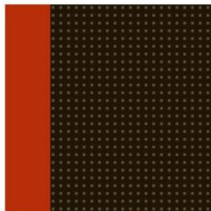
RENKLER  | 1206005017



RENKLER  | 1203569017



RENKLER  | 100436401



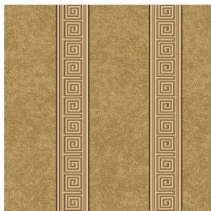
RENKLER  | 100435071



RENKLER  | 080401201



RENKLER  | 100213902



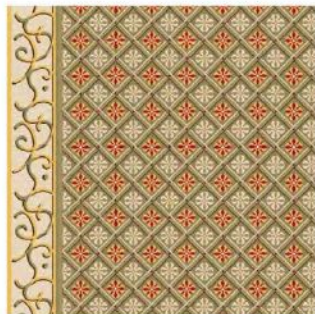
RENKLER  | 080302101



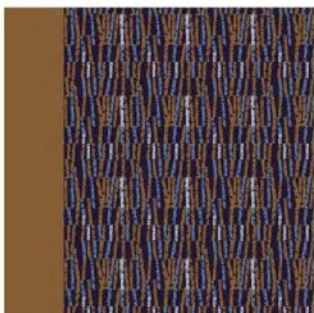
RENKLER  | 100514203



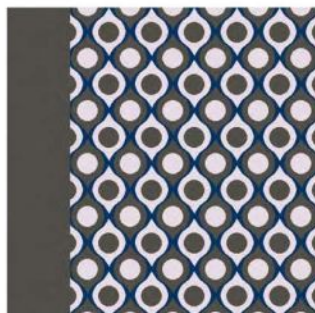
RENKLER  | 1201256017



RENKLER  | 0812045



RENKLER  | 1201258017



RENKLER  | 1201259017



RENKLER  | 1203616027-4xT1



RENKLER  | 1203616037-4x7



RENKLER | 1112289047



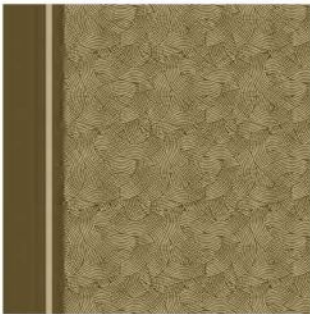
RENKLER | 1203598017-4x10



RENKLER | 1203599017-4x10



RENKLER | 1206603017



RENKLER | 1206608017



RENKLER | 1204594037



Kontrat Hali
Contract Carpet

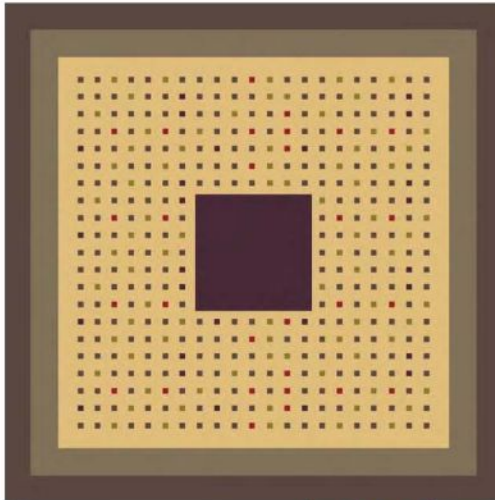
Renk ahenk
Harmony of colours



Göbek Desen / Center Piece



RENKLER  | 080600501



RENKLER  | 1112599027



RENKLER | 100206801



101210301



RENKLER  | 1203606027



RENKLER  | 1108112017



RENKLER  100314401



RENKLER  100409203



RENKLER  | 100451901



RENKLER  | 100452301



RENKLER  | 100452101



RENKLER  | 100452401



RENKLER  100413301



RENKLER  100452701



RENKLER | 100451701



RENKLER | 100452601





Kontrat Halı
Contract Carpet

Renk ahenk
Harmony of colours

Cami Desen / Mosque Carpet



1003083187



1003083197



1003085157



1003085197



1003085207



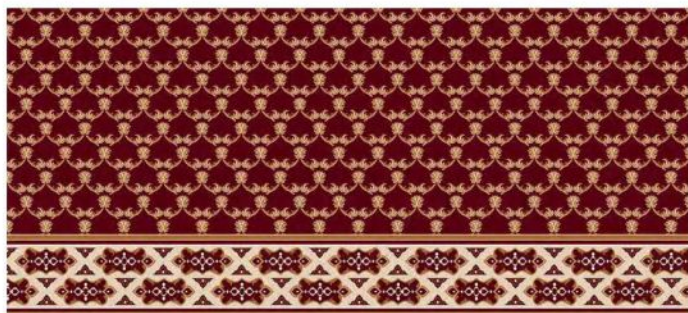
1003095027



1003095047



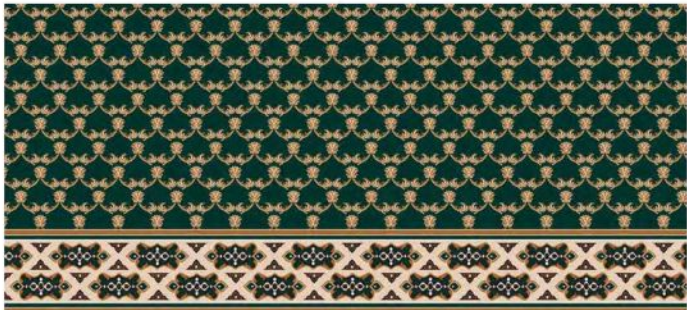
1003095097



1007073097



1007073137



1007073157



1104068027



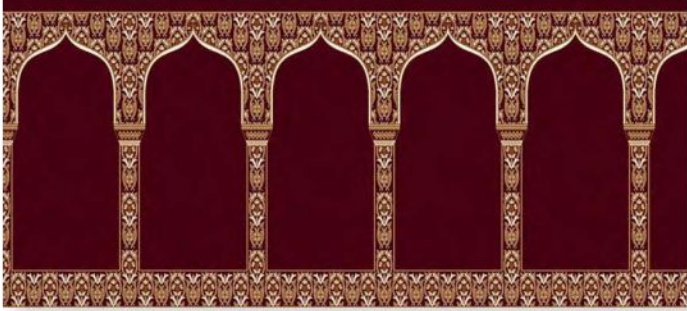
1104068047



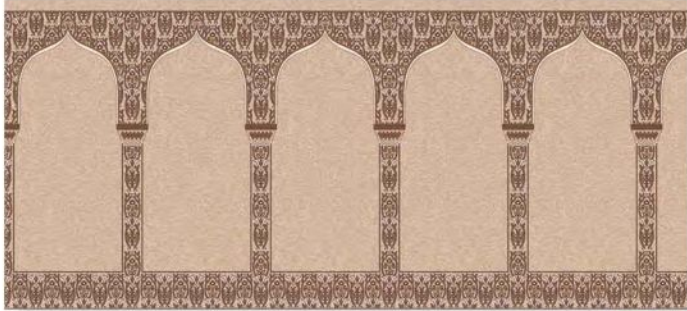
1104068077



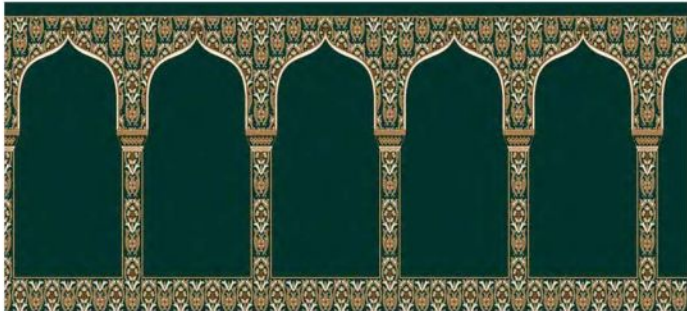
1104068087



1202525027



1202525057



1202525107



1210062027



1210062057



1210062107



1003087167



1003087107



1003087137



Kontrat Hali
Contract Carpet

Renk ahenk
Harmony of colours



DİNARSU İmalat ve Tic. T.A.Ş. 1955 yılında İSTANBUL 'da kurulmuş olup 1975 yılında Çerçekköy / Tekirdağ'daki entegre tesislerine taşınmıştır. **DİNARSU** 2005 yılı itibarıyla Erdemoğlu Holding bünyesine dâhil olmuştur.

DİNARSU Kasım 2005 yılında Erdemoğlu Holding bünyesine katılımıyla beraber modernizasyon ve kapasite artırıcı faaliyetlerine hız vermiştir. Bu amaçla makine parkuruna eklenen **76 DPI CHROMOJET** Baskı makineleri sayesinde müşterilerine sınırsız renk ve deseni, **HIGH DEFINATION** kalite ayrıcalığıyla sunmaktadır. 5 metrelik dokuma tezgâhları ve 5 metrelik sırt kaplama makineleri sayesinde alternatifin ve yeni çözümlerin öncüsü olarak Türkiye'de sektörün lideri Dünyada sayılı şirketler arasındaki yerini almıştır. 2011 yılında başlanan tesis geliştirme sürecinin neticesinde **340.000 m²** açık alan üzerine kurulu bulunan **132.000 m²** kapalı üretim alanında **30.000.000 m²**'lik yıllık üretime ulaşmayı başarmıştır. Halen devam etmekte olan yatırım sürecinde 2012 yılında temelleri atılan, 2013 yılı sonunda, yıllık **16.000 ton** kapasiteye sahip iplik üretim tesisini bünyesine katarak kendi ipliğini kendisi üretmeye başlayacaktır. Etkin ve dinamik çözümlerin adresi olan **DİNARSU**, bu tesisle birlikte bu özelliğini bir kat daha artıracaktır.

DİNARSU TÜRKİYE'DE CE sertifikasına sahip ilk tufting halı üreticisi olmakla birlikte, **TSE, ISO 9001, ISO 14001** ve **CONFIDENCE IN TEXTILES** sertifikaları sayesinde çevreye duyarlıdır. Duvardan Duvara Baskılı Halı, Tufting Halı, Non Woven Halı ve Çim Halı ürün gruplarında dünyada 40'tan fazla ülkeye ihracat yaparak, tufting halı ve baskılı halı sektöründe kısa zamanda global bir şirket olmuştur.

DİNARSU, müşteri odaklı çözüm anlayışı, iç ve dış pazar dinamiklerini etkin bir biçimde kullanarak, her iki kulvarda istikrarlı büyüyen bir kurum olarak faaliyetlerine devam etmektedir.

DİNARSU, başarı ile güdülenmiş ve sımsıkı kenetlenmiş bir ekip ruhuyla, daha hızlı, daha güncel, daha çağdaş personel yapısıyla kısa zamanda daha büyük başarıları inşa etmeyi kendisine hedef belirlemiştir.

DİNARSU İmalat ve Tic. T.A.Ş. was established in İSTANBUL in 1955 and moved to manufacturing plant located in ÇERÇEKÖY / Tekirdağ in 1975. **DİNARSU** is acquired by Erdemoğlu Holding by the 2005.

After this acquisition by Erdemoğlu Holding in November 2005, **DİNARSU** has speeded up the modernization and capacity-increasing activities. **76 DPI CHROMOJET** Printing lines were supplemented to the machinery for this purpose. This offers to clients unlimited color and pattern with **HIGH DEFINATION** quality. As the pioneer of alternative and new solutions, by 5 meter weaving looms and 5 meter back coating machines, **DİNARSU** has positioned as the leader of Turkish tufted and printed carpet industry as well as among the well known companies in the World. As a result of the plant development process initiated in 2011, **DİNARSU** increased production capacity to **30.000.000 m²** in indoor production area of **132.000 m²** where was established on an outdoor area of **340.000 m²**. During the ongoing investment process, **DİNARSU** will start producing own yarns after launch of yarn production facility with annual capacity of **16.000 tons** at the end of 2013 which construction started in 2012. Being the address of the effective and dynamic solutions, **DİNARSU** will enhance it's features by these facilities.

DİNARSU is the first tufted carpet producer certified with the CE in TURKEY as well as it is environmentally-conscious by means of **TSE, ISO 9001, ISO 14001** and **CONFIDENCE IN TEXTILES** certificates. **DİNARSU** exports it's products include Wall-to-Wall Printed Carpet, Tufted Carpet, Non-Woven Carpet and Artificial Turf product ranges more than 40 countries all around the World. It has become a major global player in a short time in the tufted carpet and printed carpet segments.

Through its customer-focused solution understanding, and effective use of local and foreign market dynamics, **DİNARSU** continues its operations as a steadily growing corporation in both markets.

With its motivated-to-success and tight-knitted team spirit as well as faster, more up-to-date, more contemporary staff structure, **DİNARSU** sets as its goal to undersign greater achievements in the shortest time.



Kontrat Halı Teknik Özellikleri / Contract Carpets Technical Specifications

KILIZ HALI COMMERCIAL CARPET	SABİNYA 100	SABİNYA 1000	SABİNYA 1200	SABİNYA 1400	SABİNYA 1600	SABİNYA 1800	SABİNYA 2000	SABİNYA 2200	SABİNYA 2400	WALL-PA 1000	WALL-PA 1400	WALL-PA 1600	WALL-PA 1800	WALL-PA 2000	WALL-PA 2200	WALL-PA 2400	WALL-PA 2600	WALL-PA 2800	
ÜRÜN MEYDANI MANUFACTURING PROCESS	PRINTED TOPPING ON PILE	PRINTED TOPPING ON PILE	PRINTED TOPPING ON PILE	PRINTED TOPPING ON PILE	PRINTED TOPPING ON PILE	PRINTED TOPPING ON PILE	PRINTED TOPPING ON PILE	PRINTED TOPPING ON PILE	PRINTED TOPPING ON PILE	PRINTED TOPPING ON PILE	PRINTED TOPPING ON PILE	PRINTED TOPPING ON PILE	PRINTED TOPPING ON PILE	PRINTED TOPPING ON PILE	PRINTED TOPPING ON PILE	PRINTED TOPPING ON PILE	PRINTED TOPPING ON PILE	PRINTED TOPPING ON PILE	PRINTED TOPPING ON PILE
HAYİPİTİ TYPE OF THE FABRIC	Polyester 6	Polyester 6	Polyester 6	Polyester 6	Polyester 6,6	Polyester 6,6	Polyester 6,6	Polyester 6,6	Polyester 6,6	Nylon 6,6	Nylon 6,6	Nylon 6,6	Nylon 6,6	Nylon 6,6	Nylon 6,6	Polyester 6	Polyester 6	Polyester 6	Polyester 6
GENİRLİK WIDTH	1/10 msh	1/10 msh	1/10 msh	1/10 msh	1/10 msh	1/10 msh	1/10 msh	1/10 msh	1/10 msh	1/10 msh	1/10 msh	1/10 msh	1/10 msh	1/10 msh	1/10 msh	1/10 msh	1/10 msh	1/10 msh	1/10 msh
YÜZÜ KURUTULMUŞ WET & SOAK RESISTANT	Özarka Capet Protector	Özarka Capet Protector	Özarka Capet Protector	Özarka Capet Protector	Özarka Capet Protector	Özarka Capet Protector	Özarka Capet Protector	Özarka Capet Protector	Özarka Capet Protector	Özarka Capet Protector	Özarka Capet Protector	Özarka Capet Protector	Özarka Capet Protector	Özarka Capet Protector	Özarka Capet Protector	Özarka Capet Protector	Özarka Capet Protector	Özarka Capet Protector	Özarka Capet Protector
ALEV ALMAZLIK TESTİ FLAMMABILITY TEST	Agel (Pile)0	Agel (Pile)0	Agel (Pile)0	Agel (Pile)0	Agel (Pile)0	Agel (Pile)0	Agel (Pile)0	Agel (Pile)0	Agel (Pile)0	Agel (Pile)0	Agel (Pile)0	Agel (Pile)0	Agel (Pile)0	Agel (Pile)0	Agel (Pile)0	Agel (Pile)0	Agel (Pile)0	Agel (Pile)0	Agel (Pile)0
HAY YÜKSEKLİĞİ (mm) (+/-) PILE HEIGHT (mm) (+/-)	5 mm	5,5 mm	6 mm	6,5 mm	5 mm	5,5 mm	6 mm	6,5 mm	7 mm	7,5 mm	8 mm	8,5 mm	9 mm	9,5 mm	10 mm	10,5 mm	11 mm	11,5 mm	12 mm
DOĞRAMA YÜKSEKLİĞİ (mm) (+/-) DOOR HEIGHT (mm) (+/-)	6,5 mm	7 mm	7,5 mm	8 mm	6,5 mm	7 mm	7,5 mm	8 mm	8,5 mm	9 mm	9,5 mm	10 mm	10,5 mm	11 mm	11,5 mm	12 mm	12,5 mm	13 mm	13,5 mm
HAY AĞIRLIĞI (g/m ²) (+/-) PILE WEIGHT (g/m ²) (+/-)	800 g/m ²	1.000 g/m ²	1.200 g/m ²	1.400 g/m ²	800 g/m ²	1.000 g/m ²	1.200 g/m ²	1.400 g/m ²	1.600 g/m ²	1.200 g/m ²	1.400 g/m ²	1.600 g/m ²	1.800 g/m ²	2.000 g/m ²	2.200 g/m ²	2.400 g/m ²	2.600 g/m ²	2.800 g/m ²	3.000 g/m ²
DOĞRAMA AĞIRLIĞI (g/m ²) (+/-) DOOR WEIGHT (g/m ²) (+/-)	1.000 g/m ²	1.200 g/m ²	1.400 g/m ²	1.600 g/m ²	1.000 g/m ²	1.200 g/m ²	1.400 g/m ²	1.600 g/m ²	1.800 g/m ²	1.400 g/m ²	1.600 g/m ²	1.800 g/m ²	2.000 g/m ²	2.200 g/m ²	2.400 g/m ²	2.600 g/m ²	2.800 g/m ²	3.000 g/m ²	3.200 g/m ²
DOĞRAMA SIKLIĞI (özellik/10 cm) SİDING PER 10 cm	0/10 mm	0/12 mm	0/14 mm	0/16 mm	0/18 mm	0/20 mm	0/22 mm	0/24 mm	0/26 mm	0/28 mm	0/30 mm	0/32 mm	0/34 mm	0/36 mm	0/38 mm	0/40 mm	0/42 mm	0/44 mm	0/46 mm
EMERK ADDED (back/10 cm) ZEP 10 per 10 cm	10x10 cm	20x20 cm	30x30 cm	40x40 cm	10x10 cm	20x20 cm	30x30 cm	40x40 cm	50x50 cm	60x60 cm	70x70 cm	80x80 cm	90x90 cm	100x100 cm	110x110 cm	120x120 cm	130x130 cm	140x140 cm	150x150 cm
ÖZARKA TAŞIN PRIMARY BACKING	WOLLEN PP	WOLLEN PP	WOLLEN PP	WOLLEN PP	WOLLEN PP	WOLLEN PP	WOLLEN PP	WOLLEN PP	WOLLEN PP	WOLLEN PP	WOLLEN PP	WOLLEN PP	WOLLEN PP	WOLLEN PP	WOLLEN PP	WOLLEN PP	WOLLEN PP	WOLLEN PP	WOLLEN PP
KONK TAŞIN SECONDARY BACKING	KESİ TAŞAN FELT BACK	KESİ TAŞAN FELT BACK	KESİ TAŞAN FELT BACK	KESİ TAŞAN FELT BACK	KESİ TAŞAN FELT BACK	KESİ TAŞAN FELT BACK	KESİ TAŞAN FELT BACK	KESİ TAŞAN FELT BACK	KESİ TAŞAN FELT BACK	KESİ TAŞAN FELT BACK	KESİ TAŞAN FELT BACK	KESİ TAŞAN FELT BACK	KESİ TAŞAN FELT BACK	KESİ TAŞAN FELT BACK	KESİ TAŞAN FELT BACK	KESİ TAŞAN FELT BACK	KESİ TAŞAN FELT BACK	KESİ TAŞAN FELT BACK	KESİ TAŞAN FELT BACK
ÖZARKA (mm) (+/-) EMERK WIDTH (cm)	4,00	4,00	4,00	4,00	4,00	4,00	4,00	4,00	4,00	4,00	4,00	4,00	4,00	4,00	4,00	4,00	4,00	4,00	4,00
KLASİFİKASYON VE REAKTİF TO FIRE EN 13953-1, EN ISO	BR-1	BR-1	BR-1	BR-1	BR-1	BR-1	BR-1	BR-1	BR-1	BR-1	BR-1	BR-1	BR-1	BR-1	BR-1	BR-1	BR-1	BR-1	BR-1
CERTIFICATE OF CONFORMITY	005-0025	005-0026	005-0026	005-0026	005-0025	005-0026	005-0026	005-0026	005-0026	005-0026	005-0026	005-0026	005-0026	005-0026	005-0026	005-0026	005-0026	005-0026	005-0026

Ürünümüzün CENTEXBEL'den akredite olmuş Alev Almazlık sertifikaları vardır.
Products have related flammability certificates accredited by CENTEXBEL.

Alev Almazlık: Piyasada yanlış olarak bilinen "yanmazlık" ifadesi gerçekçi değildir. Tüm tekstil ürünlerinde olduğu gibi, halı eyleyi de yanabilir ancak eyley yapısının alevin yayılma eğilimine izin vermeyecek biçimde tasarlanmış olması çok önemlidir.

Bir kontrat halısı üzerine yabancı bir materyal düştüğünde ateşin bulunduğu yerde sönmesi gerekir. Bu özellik; alevin yayılma eğilimi ve hızı nedeniyle ortaya çıkan boğucu gazların elimine edilmesi noktasında önem taşıyor ve alev almazlık olarak adlandırılır.

Bir halının, Kontrat Halısı sınıfında değerlendirilmesinin için mutlaka "alev almaz" özellikli eyley yapısına sahip olması gerekir.

Statik Elektriklenme: İnsanın statik elektrik yükünü hissetme sınırı "2,0 kV (2000 Volt)" tur. Literatürde bu değer "eksi-(-)" işaretli de ifade edilebilir. Kontrat Halıların elektrostatik özellikli mutlaka bu sınıra altında (< 2,0 kV) olmalıdır.

Renk Hıslığı: Kontrat halıların hıslık değerlerinin tespitinde yürürlükteki "TS- EN ve ISO" standartları kapsamındaki testlerin sonuçları esas alınır. Yapılan testlerde; Işığa Karşı Renk Hıslığı (Colour Fastness to Light), Suya Karşı Renk Hıslığı (Colour Fastness to Wet), Sürtünmeye Karşı Renk Hıslığı (Colour Fastness to Rubbing) değerlerine bakılır.

Non-flammability: The term flame proof is not a right word. Like all textile products the fibres of carpets may be inflamed. Retarding the inflammation is more important. When a flame was fall down a contract carpet should not be inflamed. The tendency of inflammation and its rate of diffusion should be eliminated and this is called as non-flammability. A carpet has to be non-flammable if it is to be regarded as contract carpet.

Static Electricity: The threshold to feel static electricity charge for humans is 2 kV. It is used with a minus sign. The electrostatic specs of contract carpets should be less than this.

Colour Fastness: Fastness measurements of contract carpets are subject to the tests of TS, EN and ISO. A better contract carpet should be passed the tests of colour fastness to light, colour fastness to wet, colour fastness to rubbing.

Ürün Seçim Kriterleri / Product Selection Criteria

KULLANIM ALANLARI EXAMPLE AREAS	SALON 800	SALON 1000	SALON 1200	SALON 1300	SALON 800	SALON 1000	SALON 1200	SALON 1400	YERLEŞİM 1200	YERLEŞİM 1400	YERLEŞİM 1600	YERLEŞİM 1800	YERLEŞİM 2000	YERLEŞİM 2500	YERLEŞİM 3000
OTEL ODASI HOTEL ROOMS	1	2	3	4	1	2	3	4	1	2	3	4	5	6	7
KORIDORLAR CORRIDORS	1	2	3	4	1	2	3	4	1	2	3	4	5	6	7
RESTORANLAR RESTAURANTS	1	2	3	4	1	2	3	4	1	2	3	4	5	6	7
OFİSLER OFFICES	1	2	3	4	1	2	3	4	1	2	3	4	5	6	7
YERLEŞİM ALANLARI RESIDENTIALS	1	2	3	4	1	2	3	4	1	2	3	4	5	6	7
KONFERANS - HALI SALONLARI CONFERENCE - HALL ROOMS	1	2	3	4	1	2	3	4	1	2	3	4	5	6	7
İŞBİRLİĞİ - İŞİMA SALONLARI MEETINGS - CINEMAS	1	2	3	4	1	2	3	4	1	2	3	4	5	6	7
HAZIRGİYER SHOPS	1	2	3	4	1	2	3	4	1	2	3	4	5	6	7

DERECELENDİRME CLASSIFICATION

1	2	3	4	5	6	7
Standart Performance	Orta Performans	Yüksek Performans	Yüksek Performans	Yüksek Performans	Yüksek Performans	Yüksek Performans

Dinersu TA.Ş.; ürünlerine ait teknik özelliklerde önceden ilan edilmeksizin değişiklik yapabilir.

Dinersu TA.Ş.; has right to make changing on the technical specifications of it's products without any declaration in advance.

Günümüzde kontrat halıları, yüksek teknoloji ürünüdür.

Elyaf teknolojisi ve halı üretim tekniklerindeki önemli ilerlemeler, halının tam anlamıyla kullanım amacına uygun olarak üretilmesine olanak sağlar. Proje uygulamaları için tercih edilmesi gereken kontrat halıları; yüksek performans ve kolay bakım avantajlarını sınırsız tasarım seçenekleriyle birleştirir.

Yoğun trafik seviyesi altındaki mekânlara için mutlaka yüksek performanslı kontrat halısı tercih edilmelidir. Bir otelin hali ihtiyacı; "odalar", "koridor" ve "genel mahaller" başlıkları altında toplanabilir. Bu mekânlara için hali seçimi yapılırken (projenin bölgesi de dikkate alınarak); odalar için 800-1000gr/m², koridorlar için 1000-1200 gr/m², genel mahaller için 1200-1400 gr/m² kalitelerden tercih yapılabilir.

Halıların tespitinde; kullanım yeri ve amacı (dayanıklılık), bakım olanakları, dekoratif ve estetik kaygılar dengelenerek karar alınmalıdır. Halının performansı ve bakım ihtiyaçları dikkatle analiz edilmelidir. Hali döşenecek alanların doğası büyük önem taşır.

Trafik seviyesi (adım yoğunluğu); binanın değişik bölümleri arasında farklılıklar gösterir ve seçilecek halının dayanım kriterleri bu doğrultuda tespit edilmelidir. Yatak odalarındaki halılar lüks olmalı, ancak genel kullanım alanları için tercih edilecek halılara oranla daha düşük yoğunlukta kullanılacakları unutulmamalıdır. Koridorlarda; sürekli ve doğrusal hareketler vardır. Valizler, servis arabaları, vb. tekerlekli ekipmanlar bu alanlarda kullanıldığından, yatak odalarına göre daha yüksek dayanıklılık gerekir. Bar ve restoranlarda; kir ve lekelerle karşı direnç en üst seviyede olmalıdır. İhtiyaç halinde, farklı özellik ve niteliklerdeki halılar aynı mekân içerisinde kullanılabilir.

Tüm bu tercihler; tesisin statüsü, ihtiyaçları ve projenin bölgesi göz önüne alınarak kesinleştirilmelidir. Piyasada satışı sunulan her halının kontrat halısı olmadığı unutulmamalıdır.

Contract carpets are the product of high technology. Important leaps in the fiber technologies and carpet manufacturing techniques made it possible to produce the best suitable tool for the aim oriented usage.

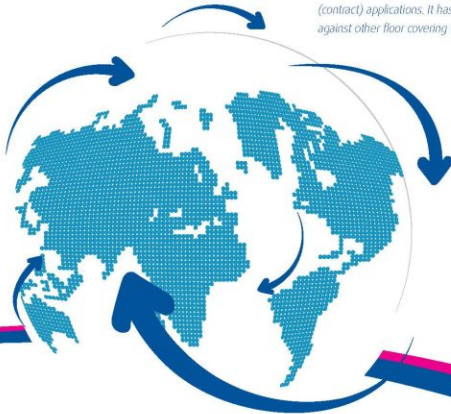
The density of traffic signals the best choice of performance carpets. The carpet needs of a hotel can be classified under the rooms, corridors and general spaces. The qualities that should be chosen for these areas are as follows: rooms 800-1000 gr/sqm, corridors 1000-1200 gr/sqm, general spaces 1200-1400 gr/sqm. The decision should be made by balancing the need for suitability for the purpose, the care factors and the decorative and aesthetic considerations. Measured as the density of steps the level of traffic varies depending on the sections of the building thus the specifications of the carpet should be decided accordingly. Carpets in bedrooms should be luxurious, however it should not be forgotten that these will be used sparingly than other common areas of the building. Continuous and linear movements are dominant in corridors. Bags, service cars, etc. are rolled on them thus they have to be more durable than those in the bedrooms. Dirt and stains are major hazards in bars and restaurants thus they should be easier to care. When needed different kinds of carpets may be laid down at the same room. All these choices should be sharpened by taking account of the status of the facility, needs and the budget of the projects. Every carpet sold in the market may not be suitable for the density of traffic in a hotel.

Türkiye’de CE sertifikasına sahip ilk ve tek tufting halı üreticisi DİNARSU

DİNARSU the first and unique tufting
carpet manufacturer in Turkey having
the CE Certificate

Duvardan duvara halılar, desen, renk ve doku seçiminde neredeyse sınırsız olanaklar sunar ve bu esneklik nedeniyle özellikle proje uygulamalarında tercih edilirler. Turistik tesisler, oteller, ofisler, restoranlar, mağazalar, bankalar, hastaneler, ticari ve sosyal mekanların ihtiyaçları dikkate alınarak hazırlanan, özel konstrüksiyon ve desenlerle üretilen halılar Kontrat Halısı olarak isimlendirilir. Bu tür mekanlar için halı seçimi yapılırken; kullanım amacına uygun, bakımı kolay ve estetik bir ürünün tespit edilmesi son derece önemlidir.

Wall to wall carpets are chosen for project applications due to their flexibility and the richness of choices in pattern, colour and structure. Carpets that were prepared for the needs of touristic facilities, hotels, offices, restaurants, stores, banks, hospitals, and commercial and social spaces are called as "contract carpet". They have to be aesthetic, easy to care and purpose oriented. Better quality of a contract carpet is hard to wear out under normal conditions. When deciding on floor coverings aesthetics considerations and performance of the product should be taken care objectively. It should be the best choice depending on its usages. Most of the time, carpet is the right choice for project (contract) applications. It has a perfect combination of advantages against other floor covering materials.



High definition printed carpet



 **dinarsu®**

yaşamınıza renk yaşantınıza ahenk
colour in your days, harmony in your life

Türkiye'de **CE Sertifikası**'na sahip ilk tufting halı üreticisidir.
The first tufting carpet manufacturer in Turkey having the **CE Certificate**.

www.dinarsu.com.tr